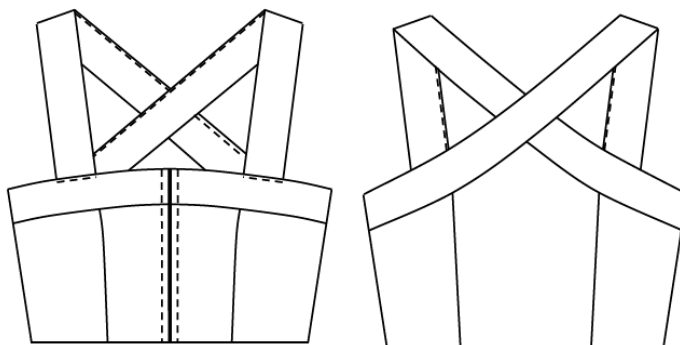




PATTERN DOWNLOAD

Upper part of dirndl dress - 112



Specifications for upper part of dirndl dress:

Outer fabric usage at 140cm fabric width: Size 34+36: 60cm; Size 38 - 46: 70cm.

Lining usage at 140cm fabric width: Same as outer fabric usage.

Iron-on fleece liner usage at 90cm fabric width: Size 34 - 38: 80cm;
 Size 40 - 46: 90cm.

Components: approx. 10 large hooks and eyelets, braid tape if desired (if the braid tape is to be made using outer fabric, this must be added to the outer fabric usage), thread.

Body measurements table:

Size	34	36	38	40	42	44	46	48	50	52
Chest measurement	81-83	85-97	89-91	93-95	97-99	103-105	109-111	115-117	121-123	127-129
Waist measurement	65-67	69-71	73-75	77-79	81-83	88-90	94-96	101-103	107-109	114-116

I recommend that you first sew this piece of clothing using test fabric in order to achieve an optimal fit.

Legal information: This pattern was created by Roswitha Töchterle. Reproduction, alteration, and providing pattern downloads to third parties without permission is forbidden. This pattern is intended for private use. No liability is assumed for errors in the pattern or sewing instructions. No guarantee is given that a piece of clothing that the customer has made according to the pattern they have ordered will fit.

For questions, please contact mail@toechterle.de.

SEWING INSTRUCTIONS

Upper part of dirndl dress - 112

The following instructions are intended as guidelines rather than mandatory requirements.

1. **Prewash cotton fabrics.**

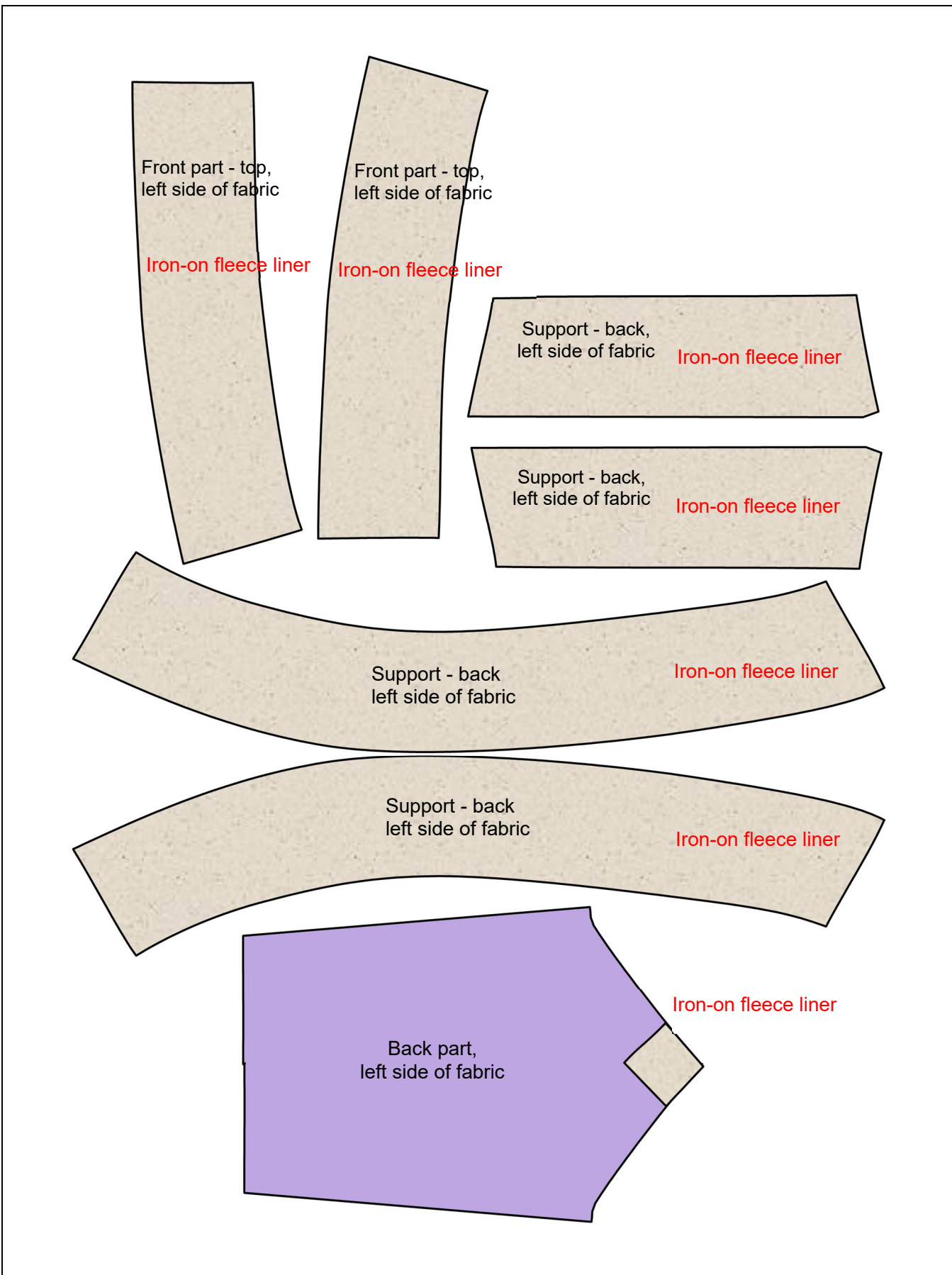
2. **a) Trimming the outer fabric:** The seam allowances are visibly indicated in the pattern. It can be cut-to-size immediately. Pay attention to the thread run! With fabrics that have a pattern, pay attention to the pattern! Each pattern part is marked with how many times it must be cut-to-size.

b) Trimming the lining: Trim the lining in the same way as the outer fabric, except for the underside. It is only cut-to-size once from outer fabric.

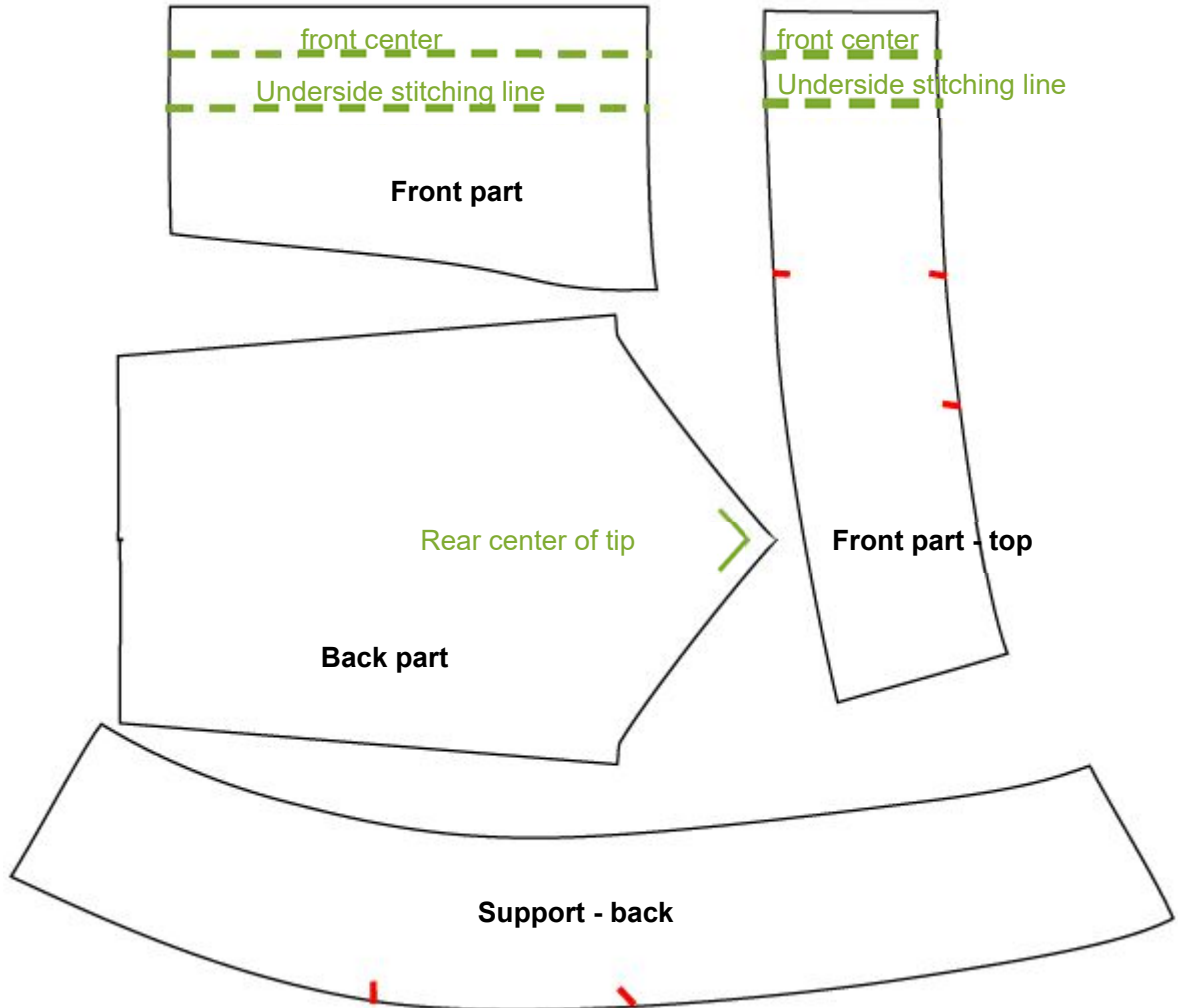
3. **Bonding the outer fabric:** Two options for reinforcing the outer fabric are presented below. Your choice between option 1 and option 2 will depend on the composition of the fabric and must be made on a case-by-case basis. Only the upper corner of the back part is bonded to the lining (see drawing: Bonding outer fabric, option 2).

Bonding the outer fabric, option 1: Bond all pattern parts with iron-on fleece liner except for the underside.

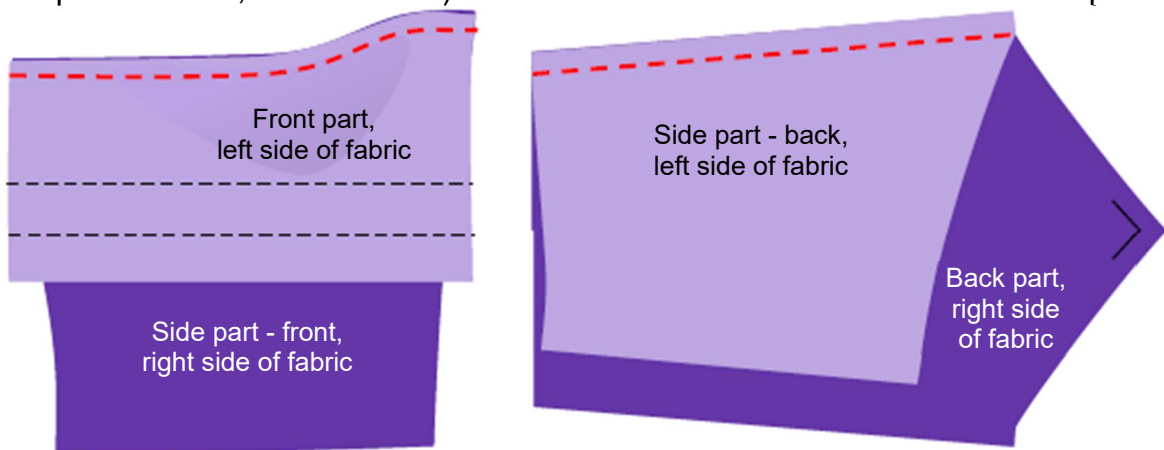
Bonding the outer fabric, option 2: Bond the pattern parts "Front part - top", "Support - front" and "Support – back" with iron-on fleece liner. Also bond the upper corner of the back part with iron-on fleece liner. There is a drawing for option 2 on the next page.



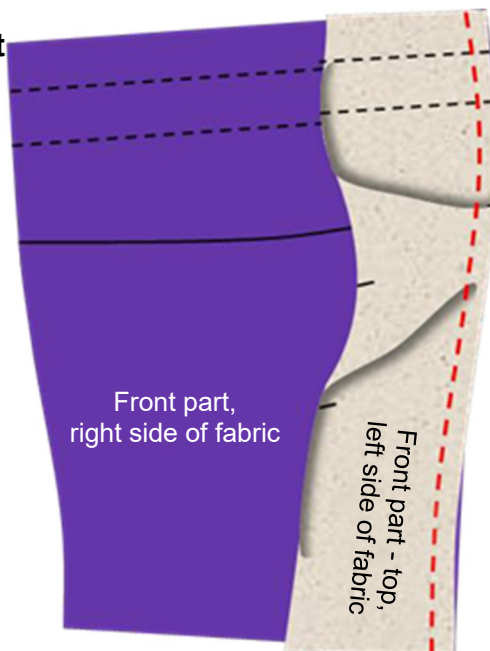
4. **Transfer the marks** from the pattern part to the left side of the outer fabric and lining. The marks are indicated here in red. Tack all green lines with tacking thread so that they are visible on both sides of the fabric.



5. **Outer fabric: Sew the dividing seams in the front parts and back parts.** (If braid tape is desired, sew it on first). Pinch the seam allowances and iron them apart.

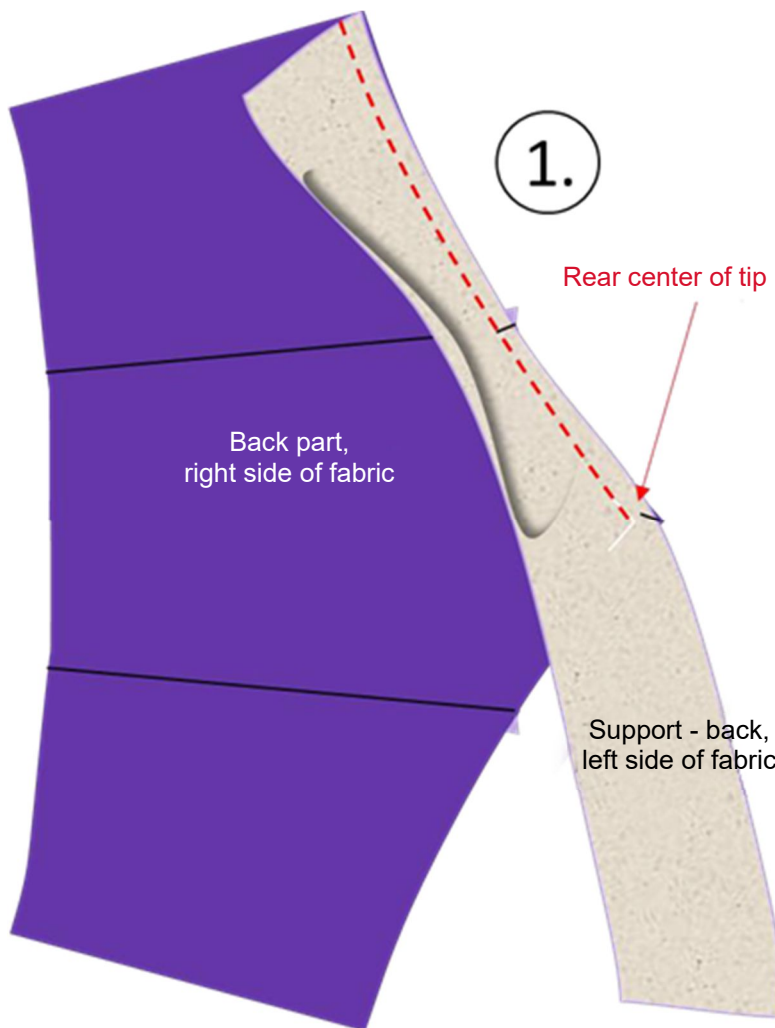


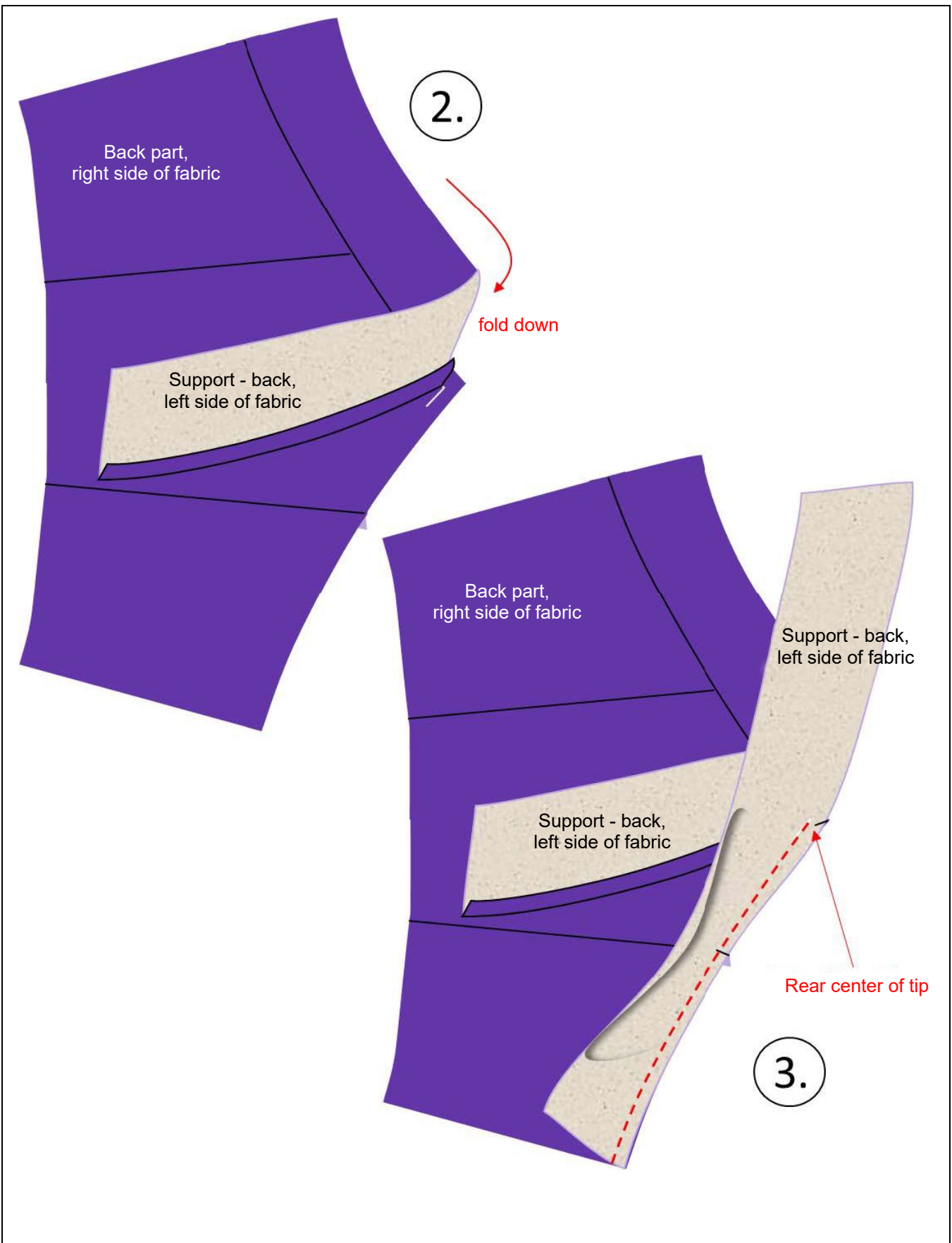
6. Outer fabric: Sew the front top part onto the front part. Iron the seam allowances upward.



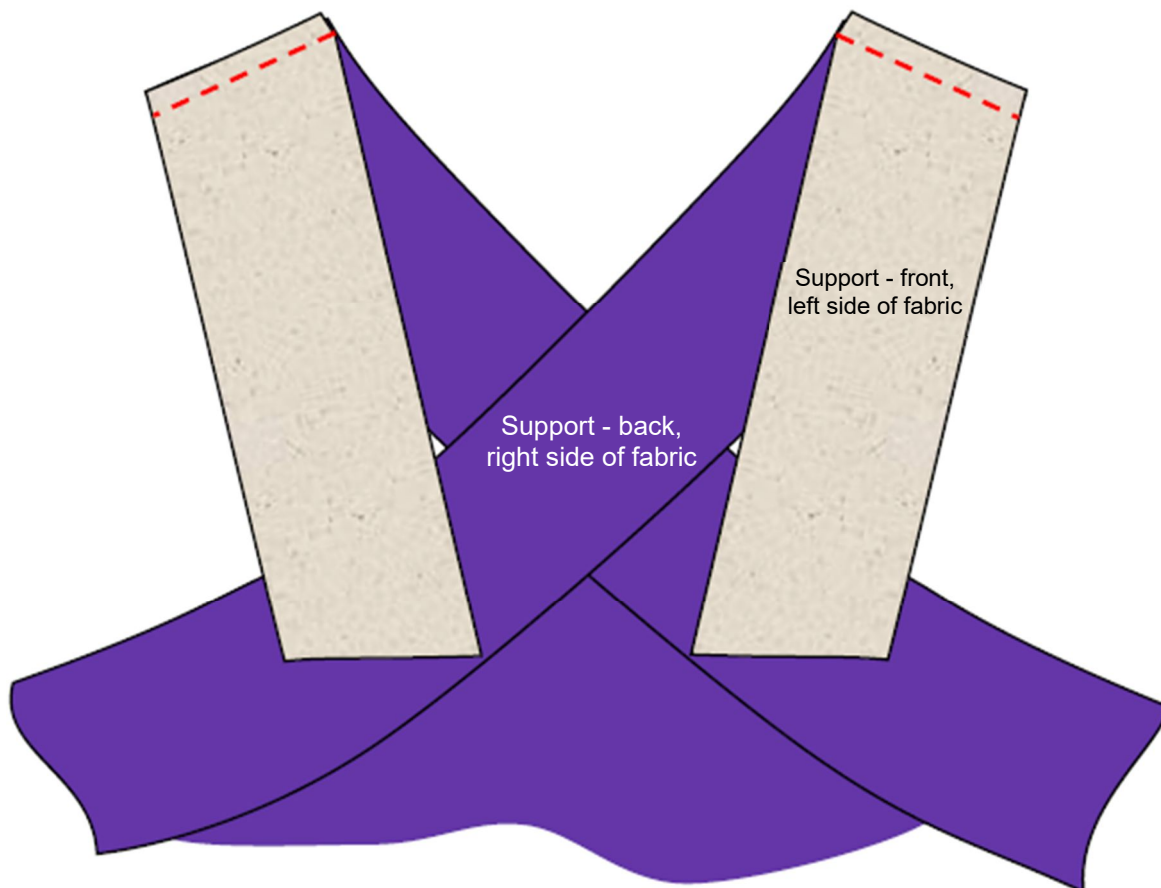
7. Outer fabric: Sew the supports to the back of the back part.

Sew each support down only up to the mark "tip of rear center". Iron the seam allowances upward.



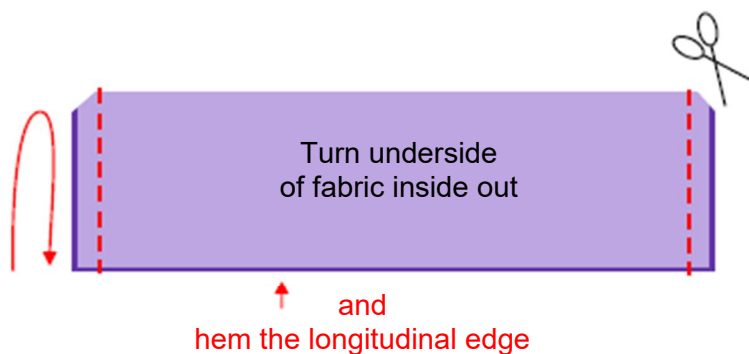


8. Outer fabric: Sew the “Support front” onto the “Support back”.
 Iron the seam allowances into the back part.

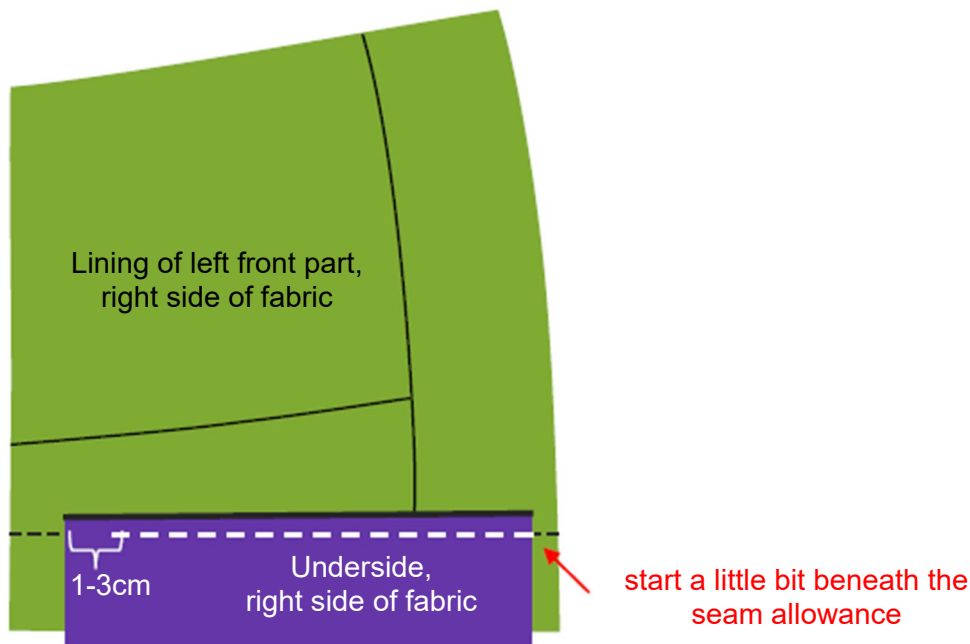


9. Sew the lining in the same way as the outer fabric, points 5, 6, 7, and 8.

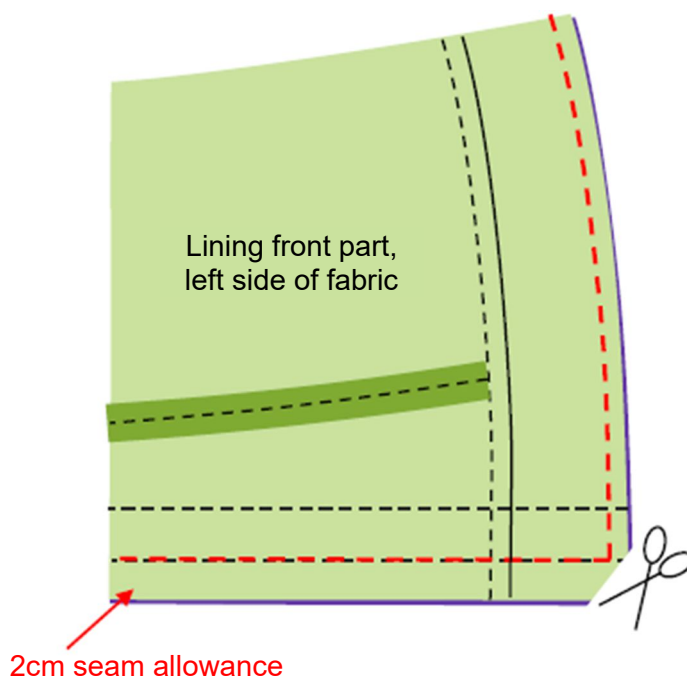
10. Crease the underside in half with the left side of the fabric on the inside. **Tuck in** the transverse edges and trim back the seam allowances at the corners. Turn the underside onto the right side of the fabric and iron it. Hem the longitudinal edge.



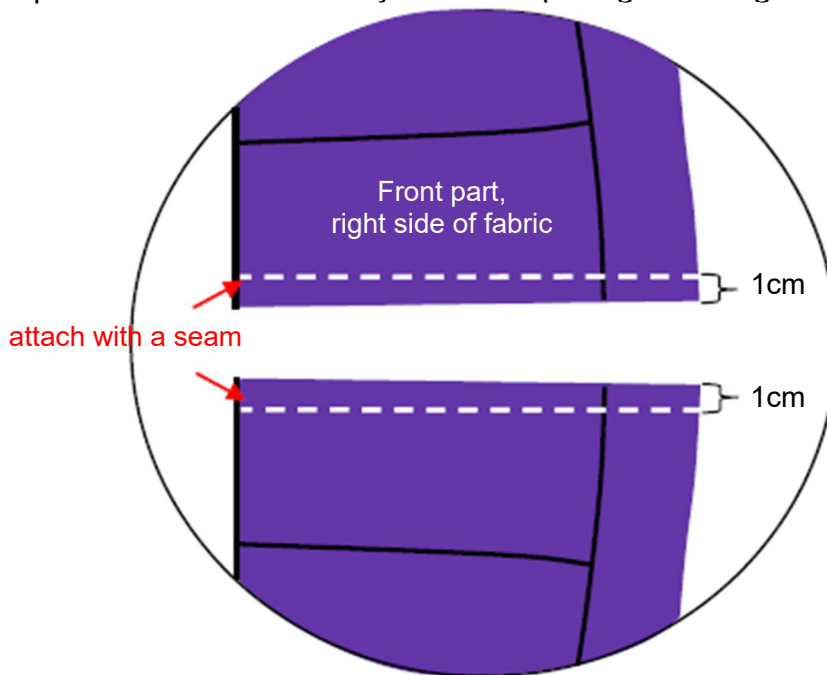
11. Sew the underside onto the left lining of the front part. For correct positioning, use the mark “underside stitching line”. The seam begins a little bit beneath the seam allowance and ends 1-3cm before the end of the underside. When sewing on the dirndl dress skirt, the underside can simply be folded upward.



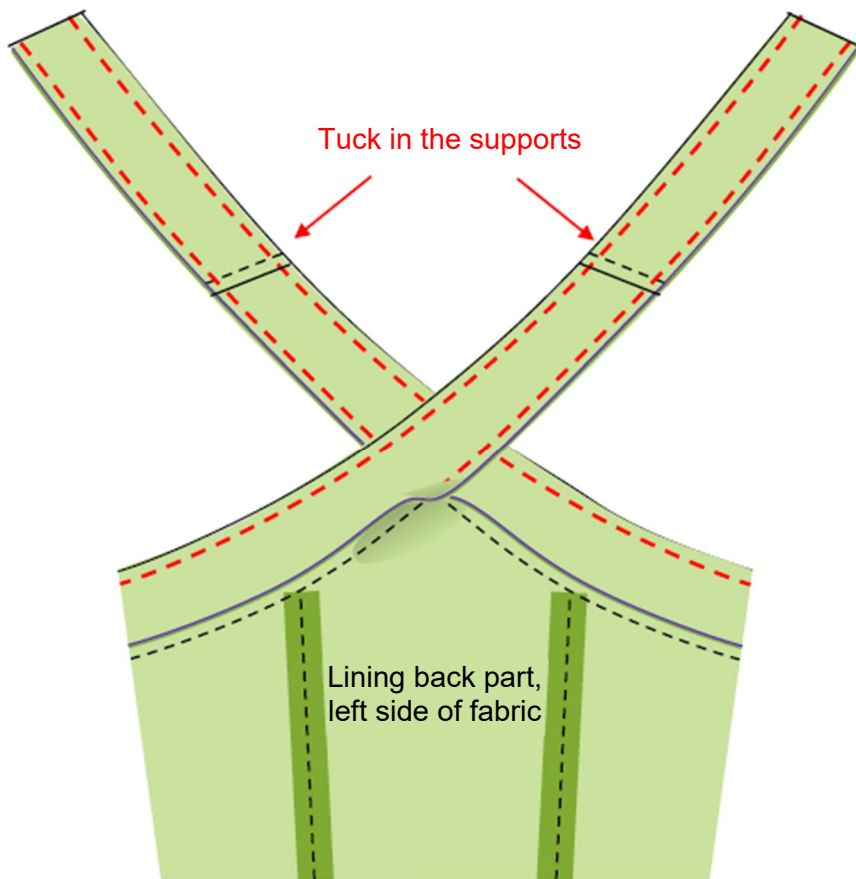
12. Front part: Place the outer fabric and the lining right sides together and **tuck** at the neckline and center front. Trim back the seam allowances, turn the front part, and iron the edges. Caution! There is a 2cm seam allowance at the front center. It provides greater stability.



13. Front part: After tucking, attach both layers (outer fabric and lining) with a seam 1cm from the center front. Fold the underside to the side when sewing. This seam is needed to prevent the hooks and eyelets from pulling the lining outward.

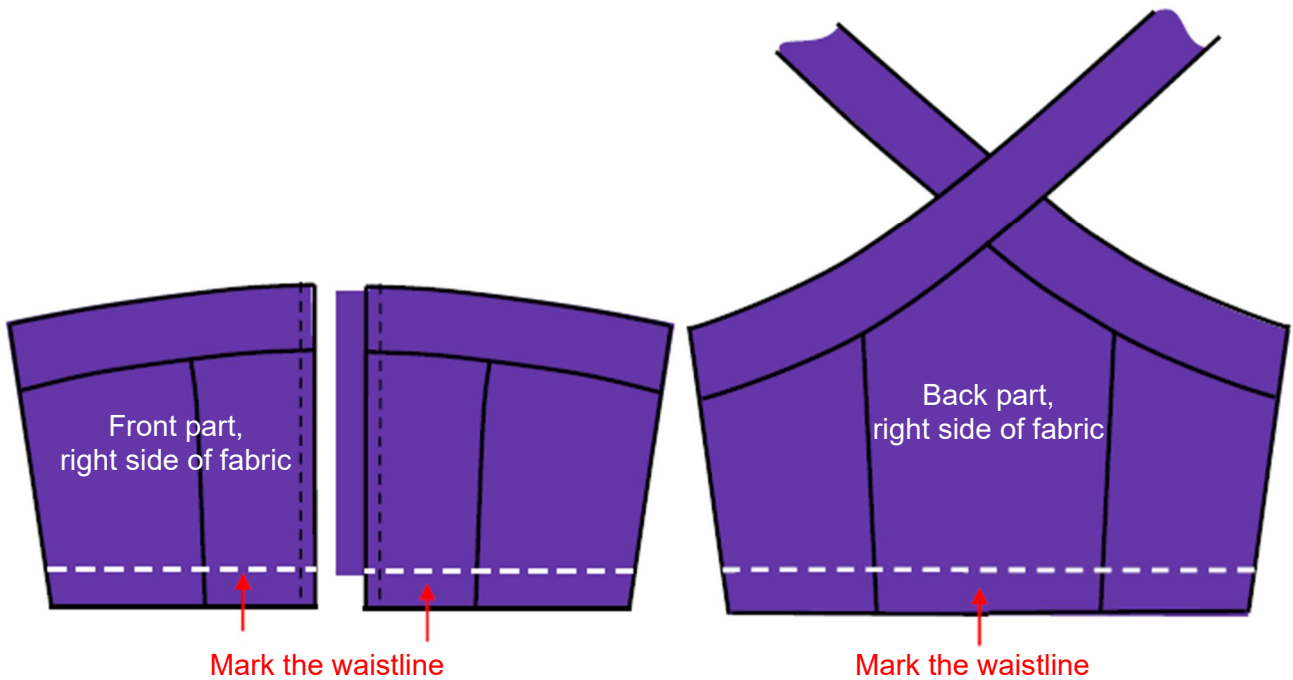


14. Back part: Place the outer fabric and the right lining on the right and **tuck** them together at the supports. Pinch the seam allowances, turn the back part, and iron the edges.



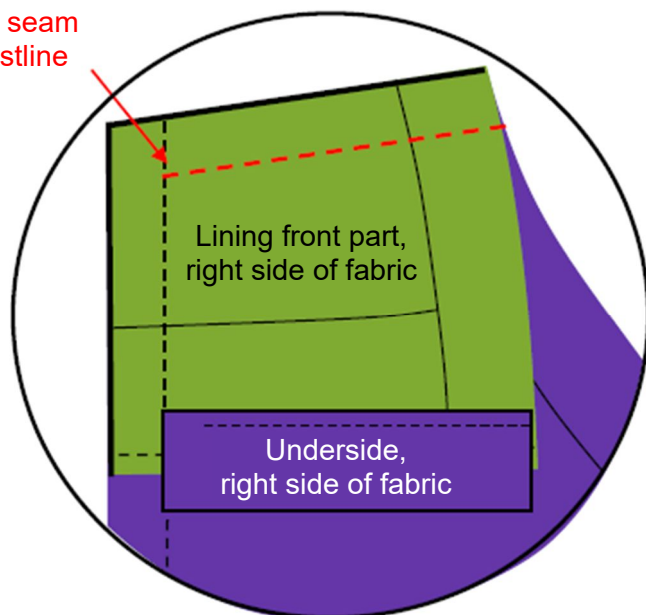
15. Hem the fabric edges of the outer fabric and lining together at the side seam and seam with a zig-zag or overlock stitch.

16. Mark the waistline with tacking thread. The waistline is indicated in the pattern, 3cm away from the edge of the seam. The dirndl dress skirt is to be sewn onto this line later.

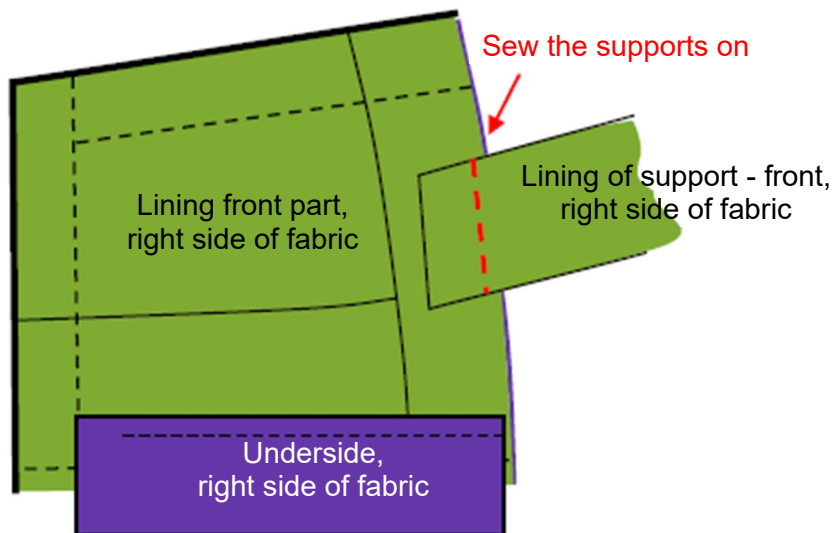


17. Sewing the side seam: The side seam has a seam allowance of 3cm to allow for changing the width later! Only sew the side seam up until the marked waistline. The rest of the side seam remains open so that it is not too tight. Iron the seam allowances apart from each other.

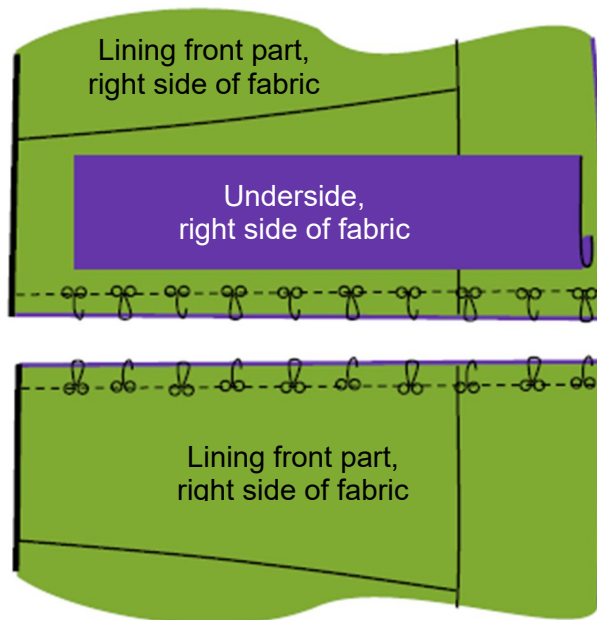
Stich the side seam up to the waistline



18. Hem the support end and sew it to the front part just below the edge. The pattern provides marks for the support position. However, it is best to find the correct position by trying on the garment.



19. Sew the hooks and eyelets onto the front center as shown in the drawing. In order to do so, fold the underside to the side. Do not sew on the lowest hook and eyelet until the skirt has been sewn on.



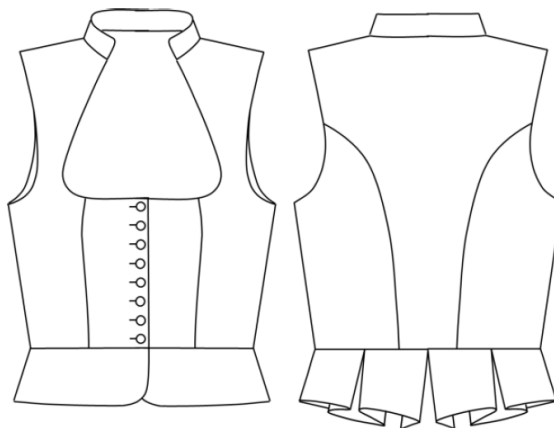
20. Sew the dirndl dress skirt on at the waistline marking. Caution! The upper part of dirndl dress waistline marking is at 3cm; the skirt should only have a seam allowance of 1cm. This results in gradation of the seam allowances. As a result, the length of the top can be adjusted as needed and the seam allowances are less bulky.

Done! Have fun sewing.



PATTERN DOWNLOAD

Upper part of dirndl dress - 119



Specifications for upper part of dirndl dress:

Outer fabric usage at 140cm fabric width: Size 34 - 42 = 110cm, Size 44 - 48 = 120cm, Size 50 - 52 = 130cm

Lining usage at 140cm fabric width: Size 34 - 42 = 60cm, Size 44 - 52 = 70cm

Iron-on fleece liner usage at 90cm fabric width: Size 34 - 40 = 110cm, Size 42 = 120cm, Size 44 - 48 = 130cm, Size 50 = 150cm, Size 52 = 160cm

Components: approx. 8 buttons, braid tape if desired (if the braid tape is to be made using outer fabric, this must be added to the outer fabric usage), thread.

Body measurements table:

Size	34	36	38	40	42	44	46	48	50	52
Chest measurement	81-83	85-97	89-91	93-95	97-99	103-105	109-111	115-117	121-123	127-129
Waist measurement	65-67	69-71	73-75	77-79	81-83	88-90	94-96	101-103	107-109	114-116

I recommend that you first sew this piece of clothing using test fabric in order to achieve an optimal fit.

Legal information: This pattern was created by Roswitha Töchterle. Reproduction, alteration, and providing pattern downloads to third parties without permission is forbidden. This pattern is intended for private use. No liability is assumed for errors in the pattern or sewing instructions. No guarantee is given that a piece of clothing that the customer has made according to the pattern they have ordered will fit.

For questions, please contact mail@toechterle.de.

SEWING INSTRUCTIONS

Upper part of dirndl dress - 119

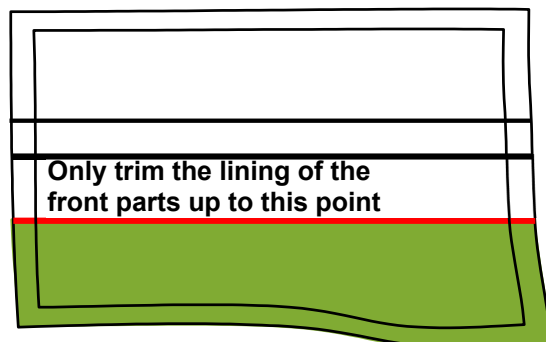
The following instructions are intended as guidelines rather than mandatory requirements. Prewash cotton fabrics.

1.

2. **A) Trimming the outer fabric:** The seam allowances are visibly indicated in the pattern. It can be cut-to-size immediately. Pay attention to the thread run! With fabrics that have a pattern, pay attention to the pattern! Each pattern part is marked with how many times it has to be cut-to-size.

B) Trimming the lining: Trim the lining in the same way as the outer fabric, except for the lining of the front parts.

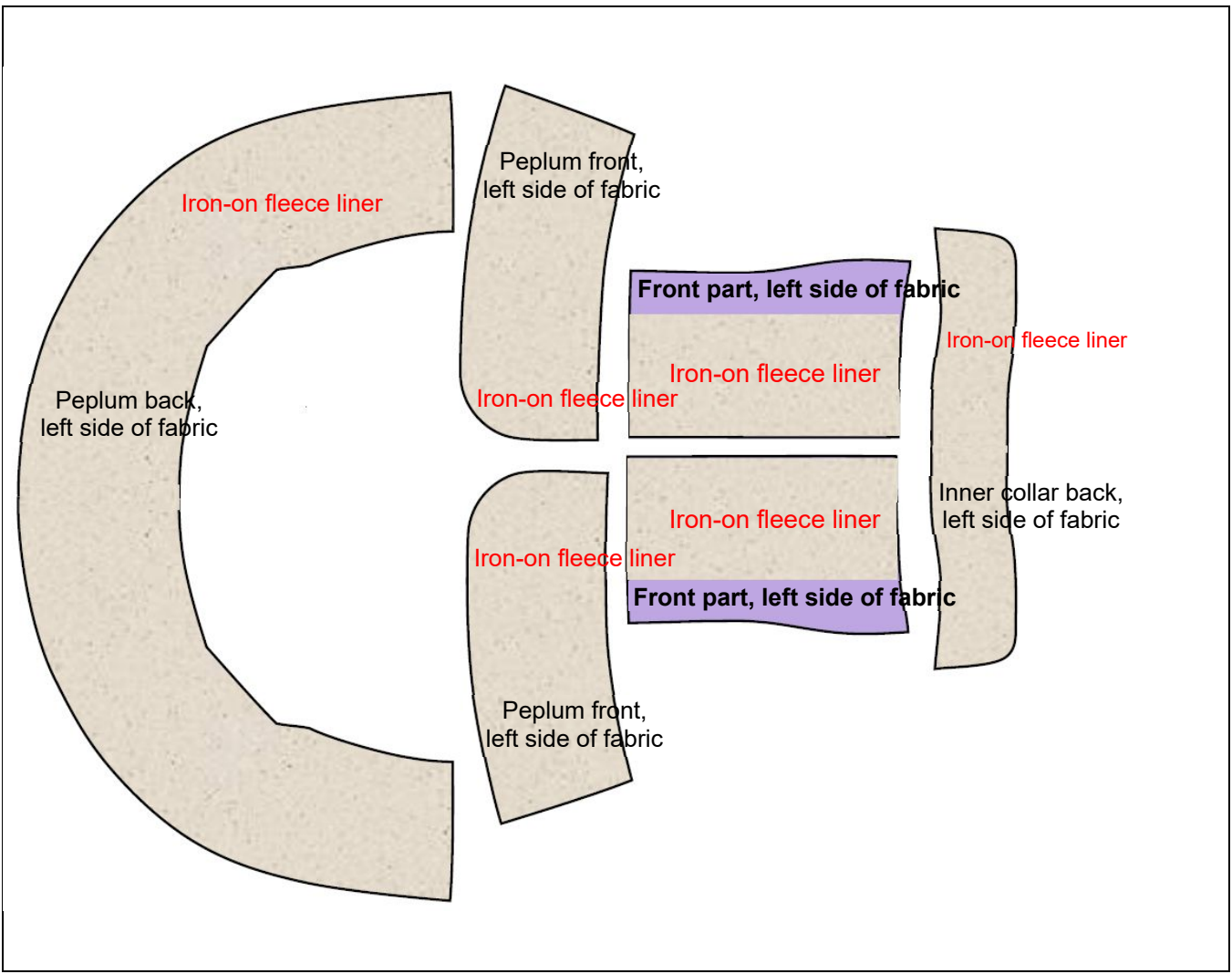
Only trim it to the line indicated in the pattern. It already contains the seam allowances.



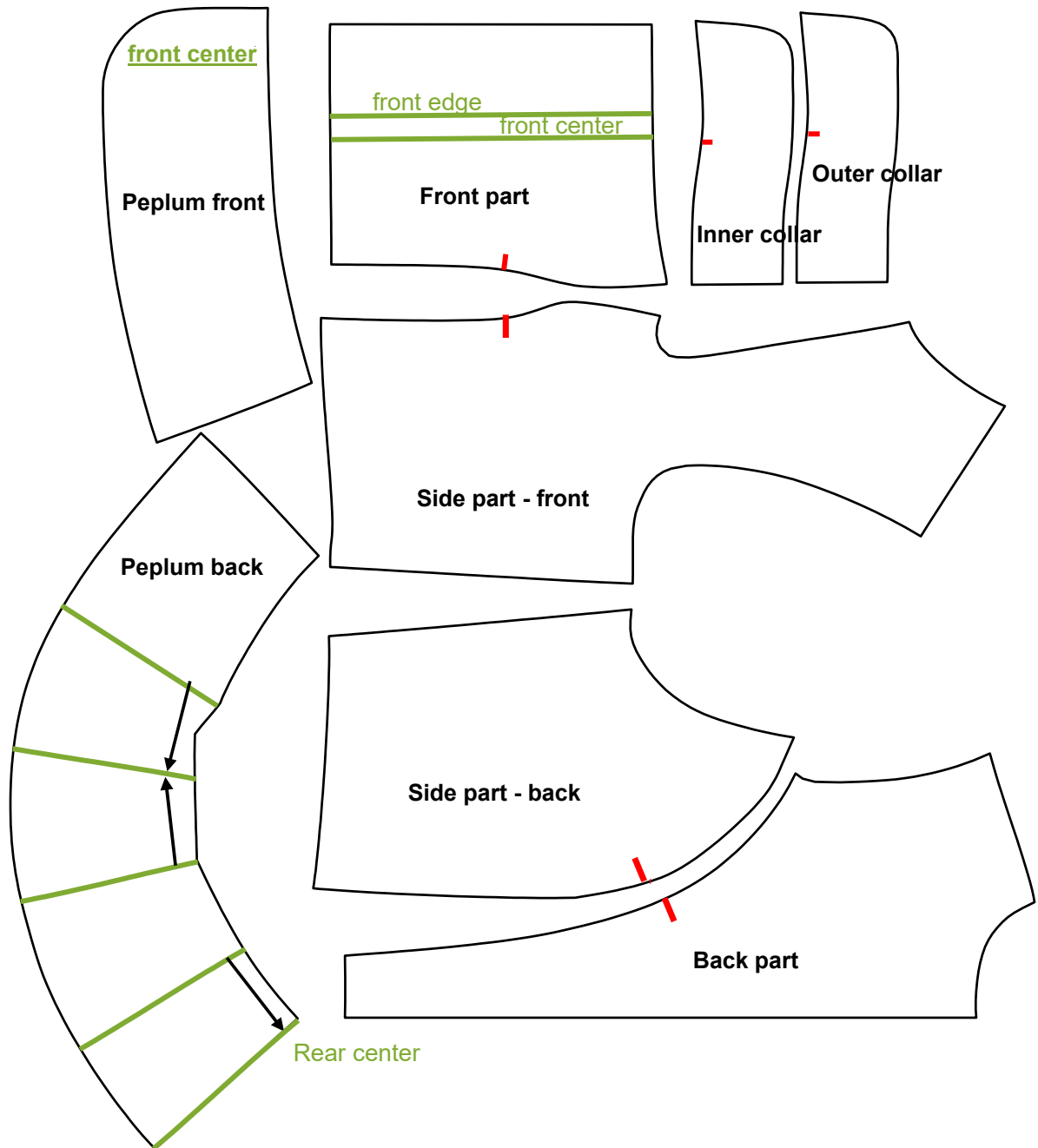
3. **Bonding the outer fabric:** Two options for reinforcing the outer fabric are presented below. Your choice between option 1 and option 2 will depend on the composition of the fabric and must be made on a case-by-case basis. The lining is not bonded.

Bonding the outer fabric, option 1: Bond all pattern parts with iron-on fleece liner.

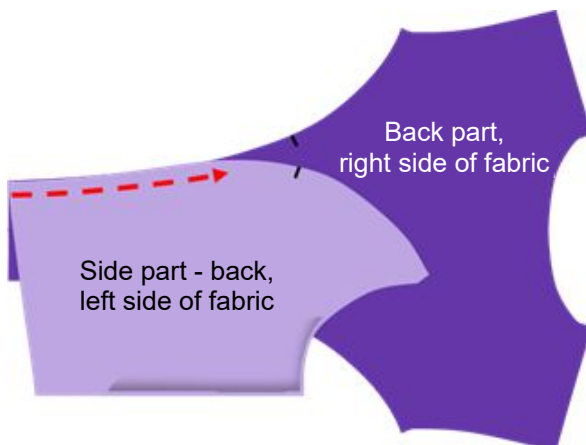
Bonding the outer fabric, option 2: Only bond the front area of the front parts with iron-on fleece liner. The buttons and buttonholes will be sewed on here later. Bond the pattern parts for the inner collar, 1x peplum back and 2x peplum front. There is a drawing for option 2 on the next page.



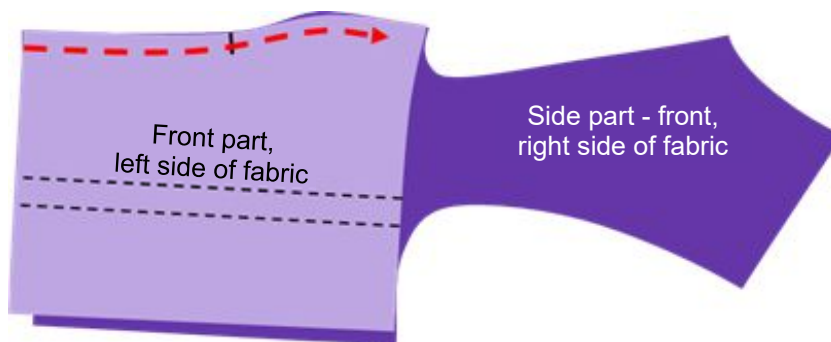
4. **Transfer the marks** from the pattern part to the left side of the outer fabric and lining. The marks are indicated here in red. Tack all green lines with tacking thread so that they are visible on both sides of the fabric.



5. **Sew the back part of the outer fabric onto the back side part** (If braid tape is desired, sew it on first). Iron the seam allowances for the back center.



6. **Sew the front parts of the outer fabric onto the front side part** (if braid tape is desired, sew it on first). Iron the seam allowances for the front center.

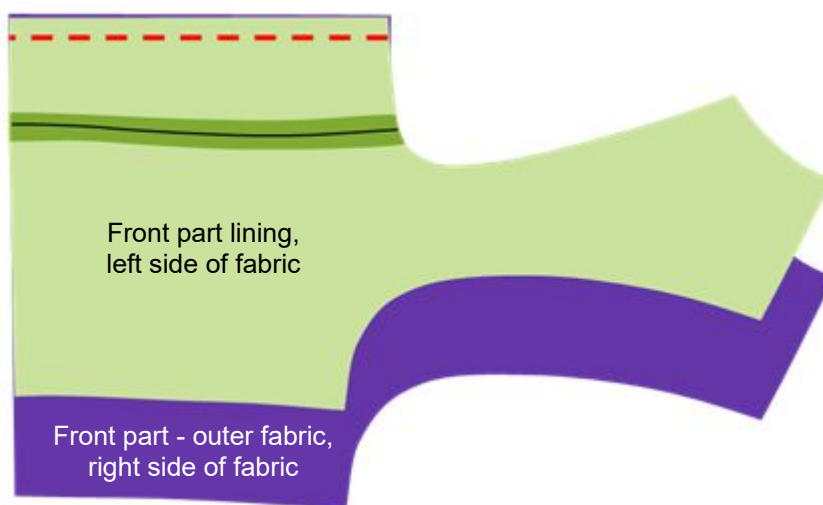


7. **Sew the shoulder seams of the outer fabric.** Iron the seam allowances into the back part.

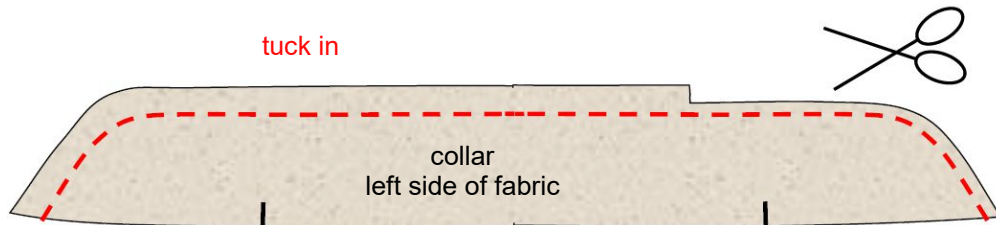
8. **Sew the lining in the same way as the outer fabric** (points 5, 6, and 7).

9. **Sew the lining and the outer fabric together** in the front part. Iron the seam allowances for the side seam.

Sew the outer fabric and lining together

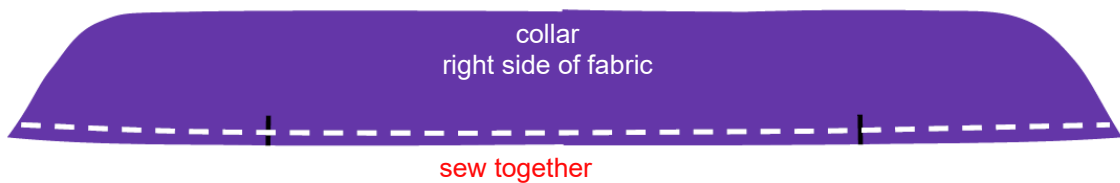


10. Tuck in the collar and trim back the seam allowances.

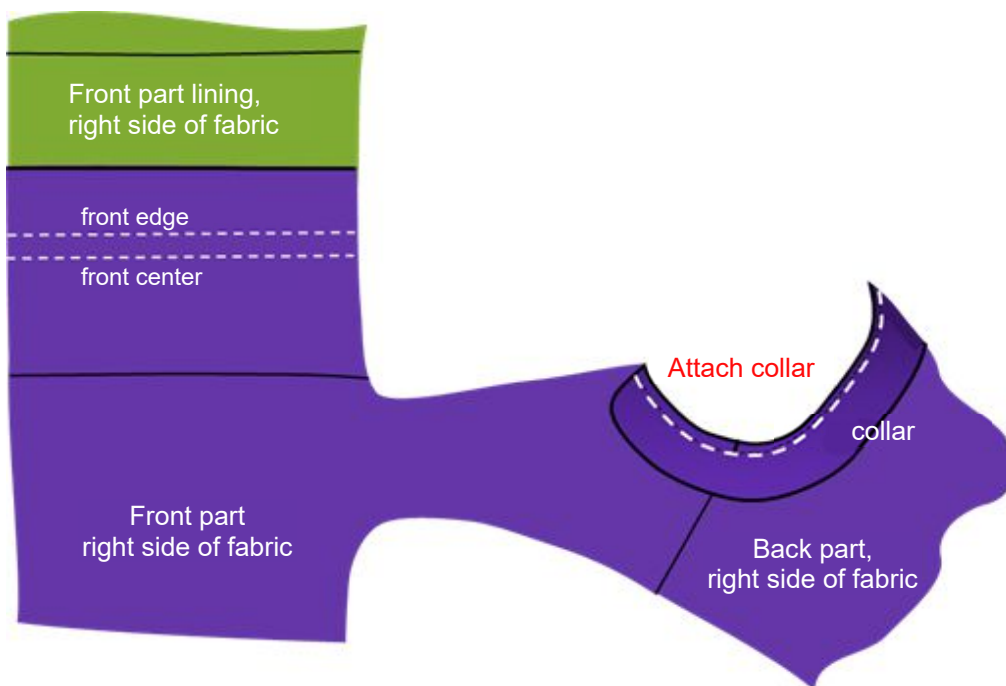


The outer collar is 1cm longer than the inner collar. The longer length of the outer collar must be equally distributed when tucking in the fabric. This will make the collar sit better around the neck and there will not be any wrinkles in the inner collar.

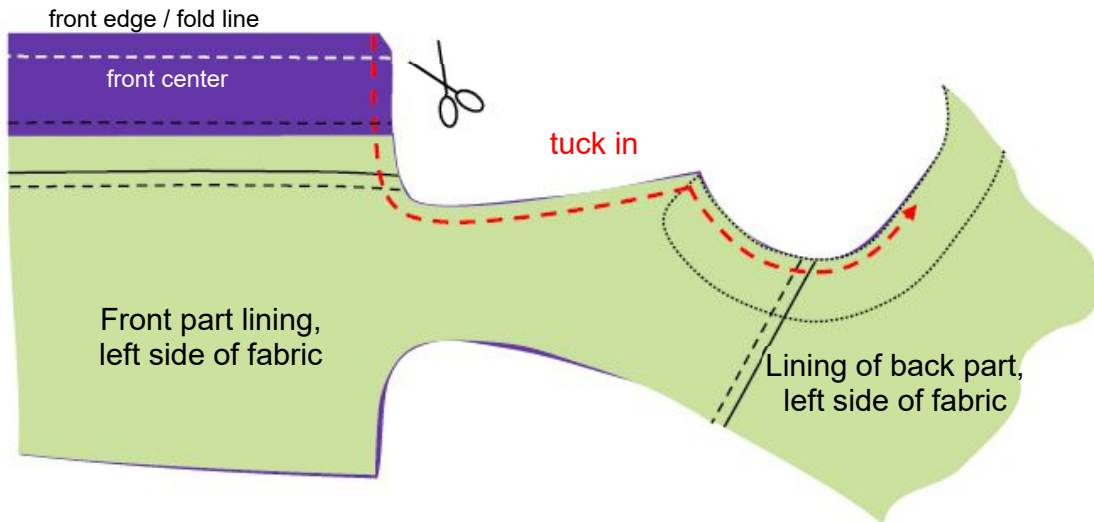
After tucking in the collar, turn it, iron it, and sew the **edge that is still open** with a 0.5cm seam allowance.



11. Attach the collar to the neckline of the outer fabric. Make sure that the inner collar is on top.



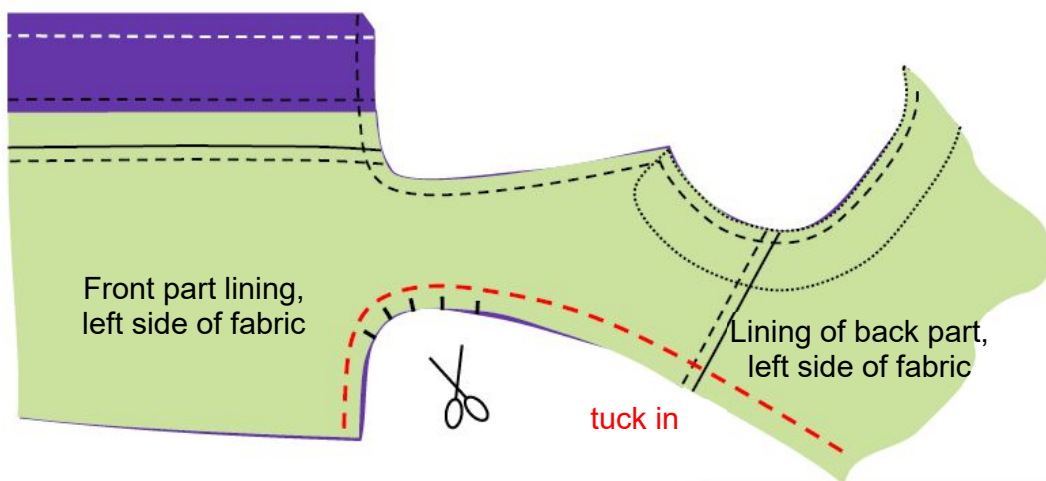
12. Tuck in the front edge and the neckline: Place the outer fabric and the lining right sides together. The front edge is the fold line. The collar goes between the layers and is sewed together with them when tucking in. After tucking, trim back the seam allowances and pinch. Turn the neckline and iron the edges.



13. Topstitch the neckline of the back part.



14. Tuck in the armholes: Place the outer fabric and the lining right sides together and tuck in the armholes. After tucking, trim back the seam allowances and pinch. Turn the part to the right side of the fabric (the front parts are pulled through the shoulders) and iron the edges.

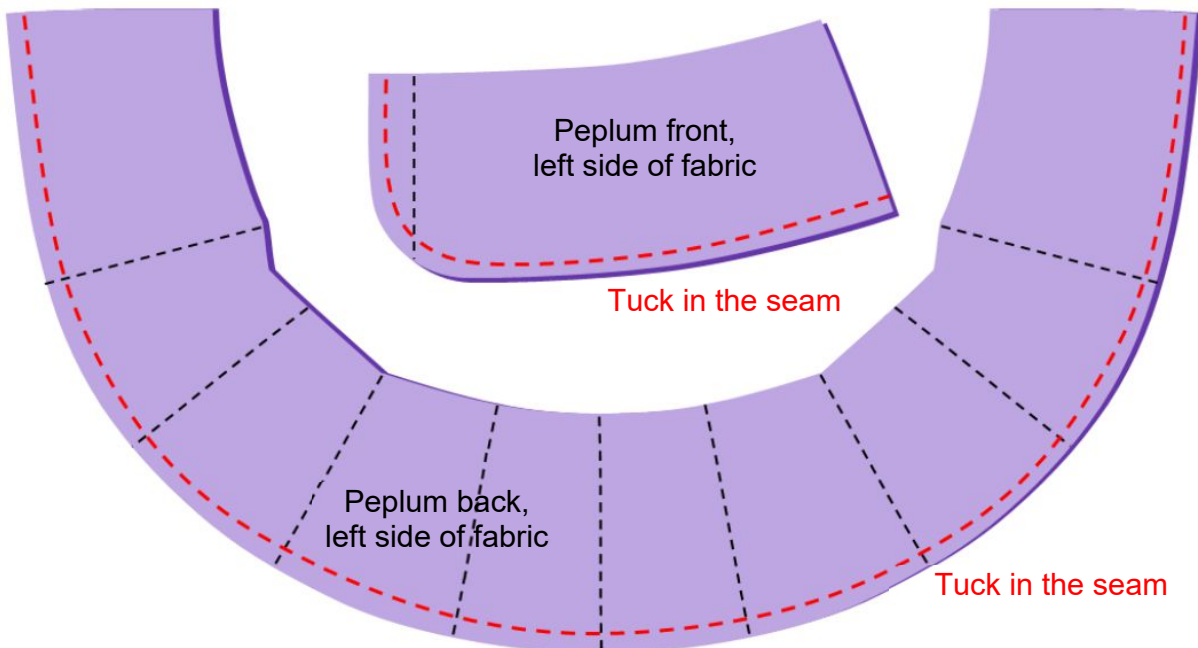


15. Hem the fabric edges of the outer fabric and lining together at the side seam and seam with a zig-zag or overlock stitch.

16. Mark the waistline with tacking thread. The waistline is indicated in the pattern, 3cm away from the edge of the seam. The peplum will be sewn onto this line later.

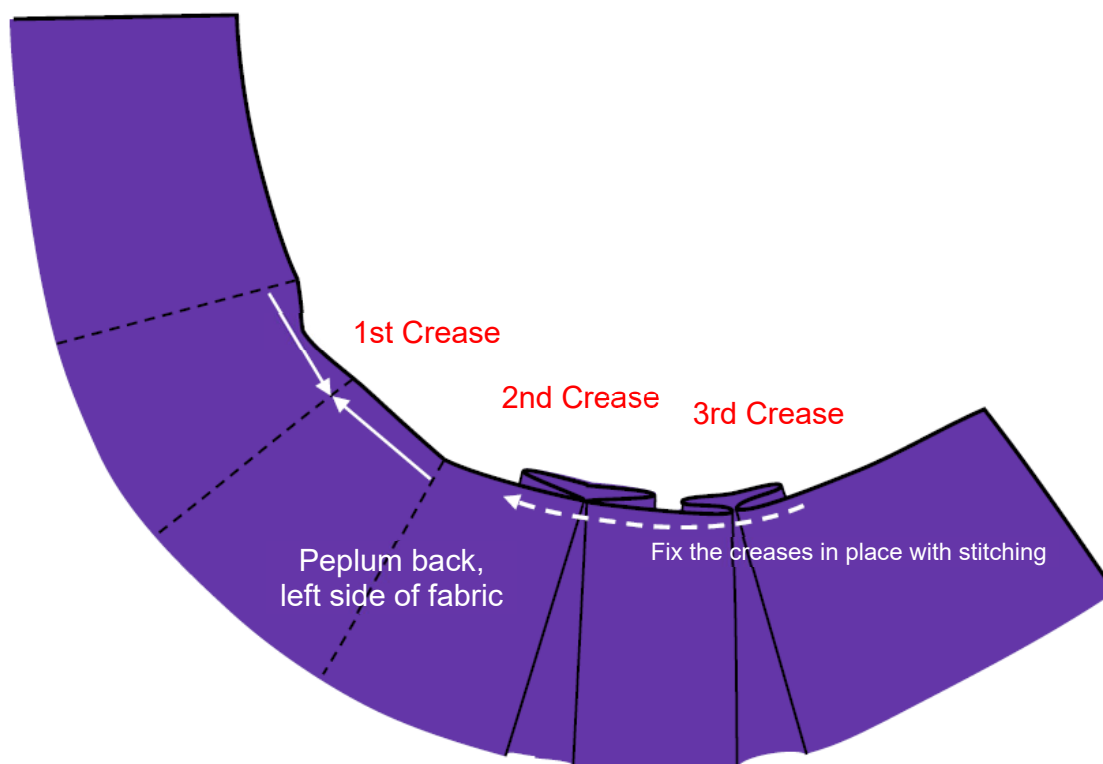


17. Tuck the “Peplum - right” and “Peplum back” over at the seam (if braid tape is desired, sew it on first). Turn the parts and iron the edges.



18. Hem the remaining **fabric edges of the peplum** with zig-zag or overlock stitch, both fabric layers together. The front part and peplum are now finished and ready to be sewn on (see point 20).

19. Position the creases in the **“Peplum back”** and fix them in place with stitching. This results in three box pleats.



20. Sew the peplum onto the waistline of the front part and back part with a 1cm seam allowance. This results in gradation of the seam allowances. As a result, the length of the top can be adjusted as needed and the seam allowances are less bulky.

Caution! Do not sew the seam allowances together with the side seam!

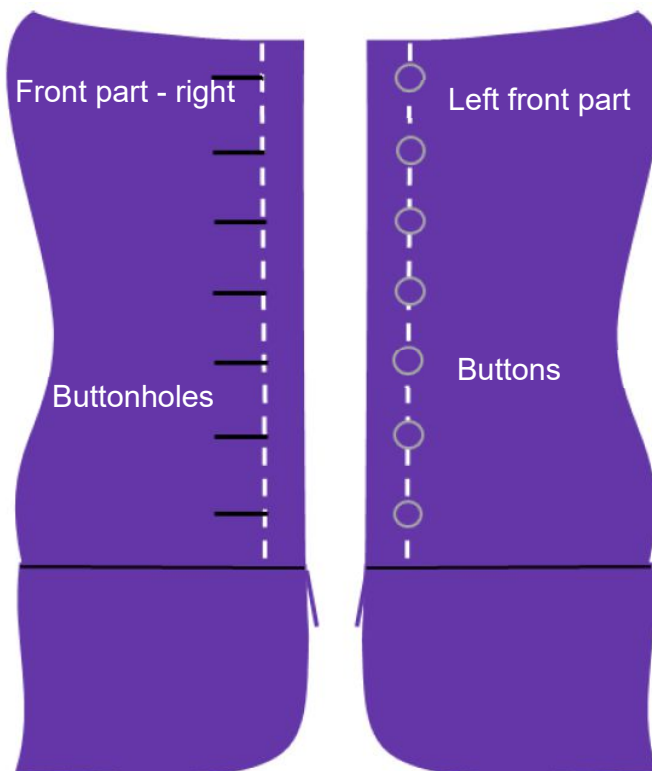
The drawing for this point appears on the next page.



21. Sew the side seam with a seam allowance of 3cm. Iron the seam allowances and attach them to the armhole and seam with hand stitches.

22. Buttons and buttonholes: Sew the buttonholes horizontally into the right front part as marked at the front center. Sew the buttons onto the left front part as marked at the front center. The waistline's seam allowances must be placed downward in the front part.

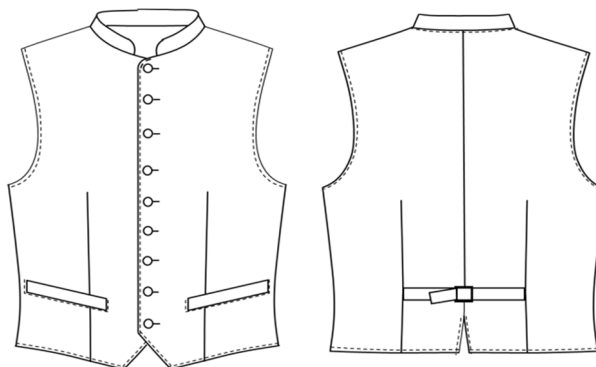
Done! Have fun sewing.





PATTERN DOWNLOAD

Men's waistcoat - 134



Specifications for the men's waistcoat:

Outer fabric one: Front, front part reinforcement, inner collar, outer collar, pocket strip, pocket pouch. Outer fabric usage at 140cm fabric width: Size 46 - 52 = 70cm, Size 54 - 56 = 80cm, Size 58 - 60 = 90cm

Outer fabric two: Back part, back strap. Outer fabric usage at 140cm fabric width: Size 46 - 58 = 70cm, Size 60 = 80cm

Lining: Back part, front part lining. Lining fabric usage at 140cm fabric width: Size 46 - 54 = 70cm, Size 56 - 60 = 80cm

Iron-on fleece liner: Front part, front part reinforcement, inner collar, outer collar, pocket strip. Iron-on fleece liner usage at 90cm fabric width: Size 46 - 48 = 80cm, Size 50 - 54 = 90cm, Size 56 - 60 = 110cm

Components: Approx. 90cm lacing ribbon, approx. 10 buttons, back clasp, thread.

Body measurements table:

Size	46	48	50	52	54	56	58	60
Chest measurement	95-98	99-102	103-106	107-110	111-114	115-118	119-122	123-126
Waist measurement	82-85	86-89	90-93	94-98	99-103	104-108	109-113	114-118

I recommend that you first sew this piece of clothing using test fabric in order to achieve an optimal fit.

Legal information: This pattern was created by Roswitha Töchterle. Reproduction, alteration, and providing pattern downloads to third parties without permission is forbidden. This pattern is intended for private use. No liability is assumed for errors in the pattern or sewing instructions. No guarantee is given that a piece of clothing that the customer has made according to the pattern they have ordered will fit. For questions, please contact mail@toechterle.de.

SEWING INSTRUCTIONS

Men's waistcoat - 134

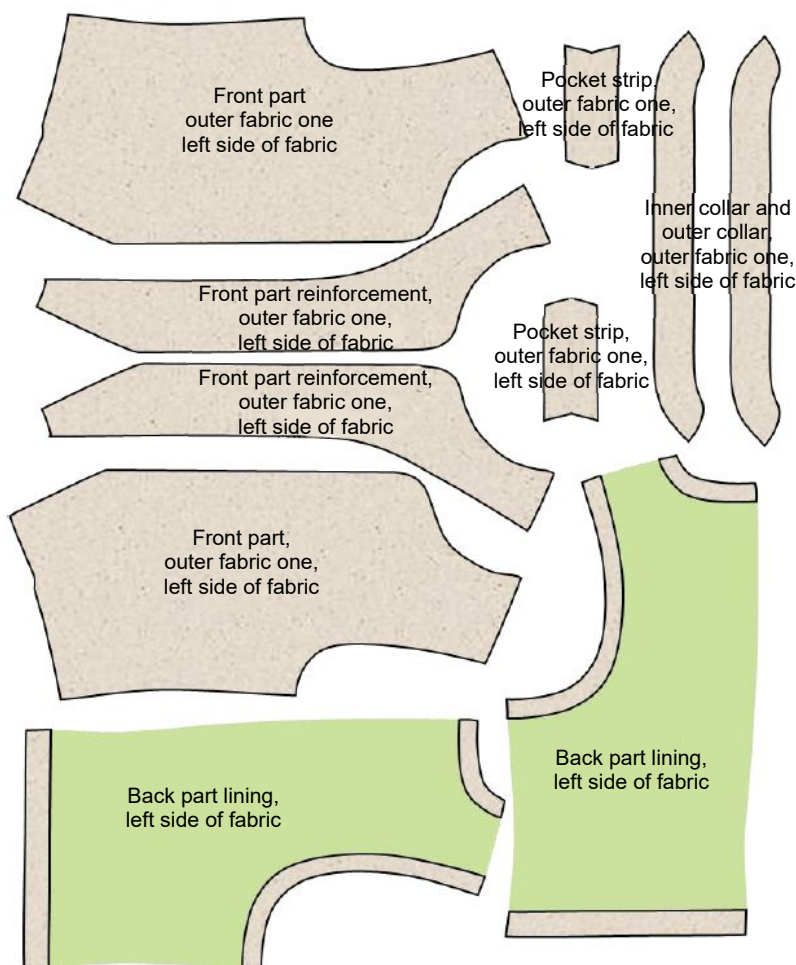
The following instructions are intended as guidelines rather than mandatory requirements.

1. Prewash cotton fabrics.

2. Trimming: The seam allowances are visibly indicated in the pattern. It can be cut-to-size immediately. Each pattern part is marked with how many times it must be cut-to-size and from which fabric. The waistcoat is composed of three different fabrics.

Outer fabric one: Front, front part reinforcement, inner collar, outer collar, pocket strip, pocket pouch. **Outer fabric two:** Back part and back strap. **Lining:** Back part and front part lining. When cutting, pay attention to the thread run! With fabrics that have a pattern, pay attention to the pattern!

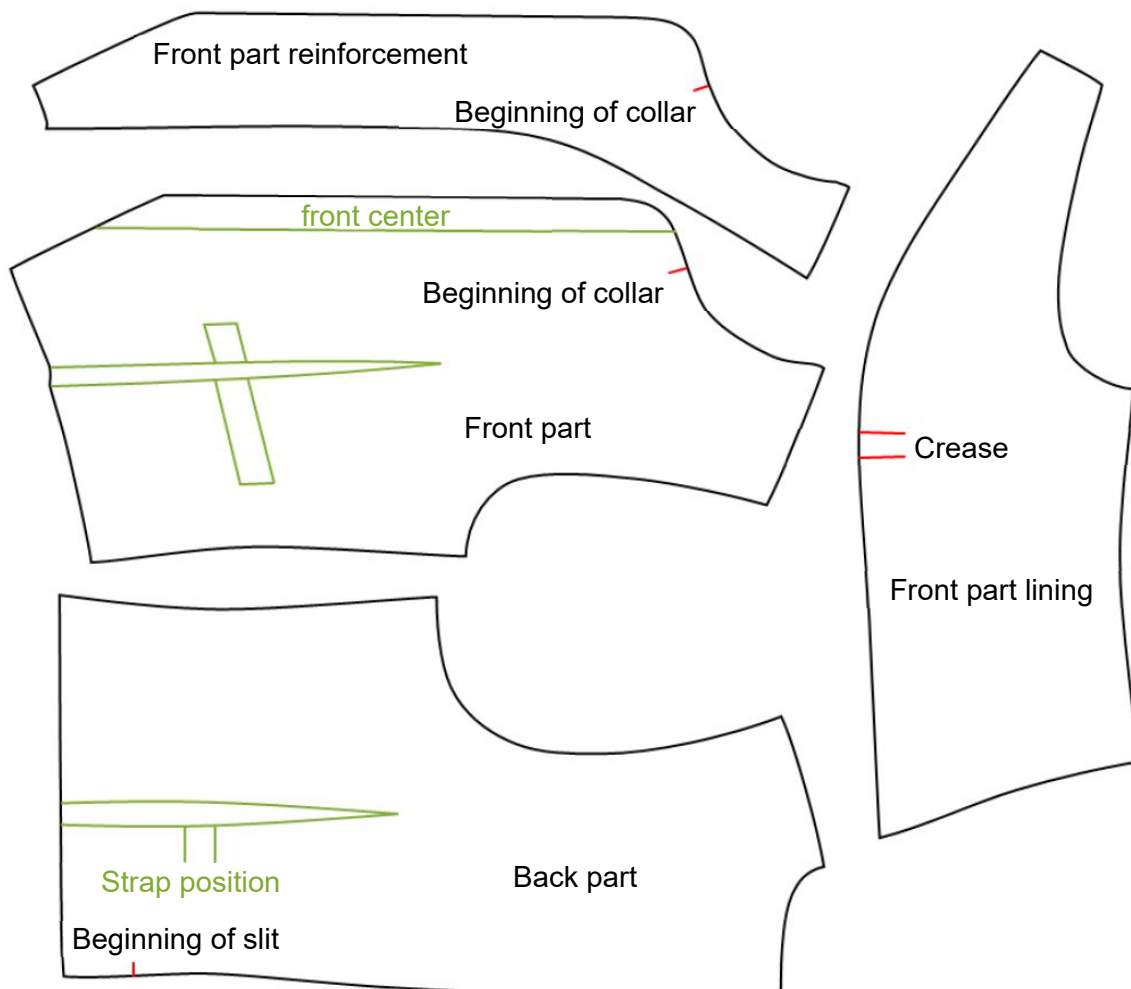
3. Bonding outer fabric one: Bond the inner collar, outer collar, pocket strip, front part and front part reinforcement with iron-on fleece liner.



Bonding the lining:

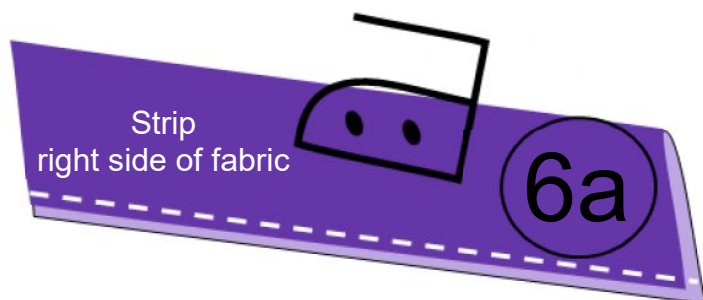
Secure back part seam, back part neckline, and back part armhole with lacing ribbon to the lining.

4. Transfer the marks from the pattern part to the left side of the outer fabric and lining. The marks are indicated here in red. Tack all green lines with tacking thread so that they are visible on both sides of the fabric.

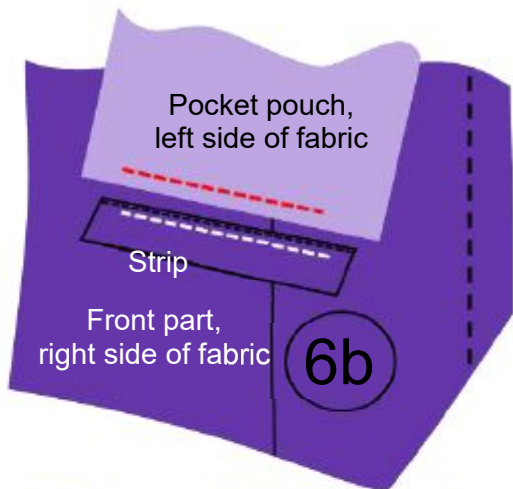


5. Sew the dart into the front part and iron the seam allowance for the front center.

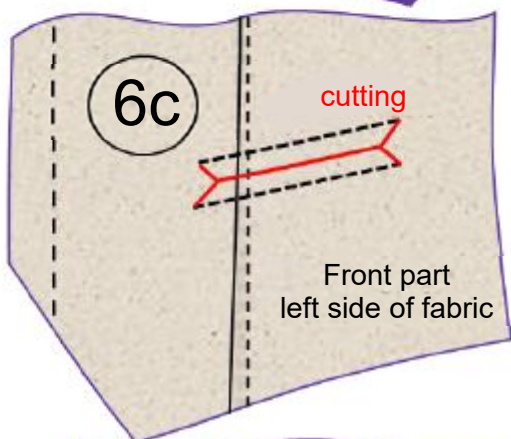
6. Strip pocket:



a) Crease the strip in half lengthwise (right side out) and iron it. Sew the open longitudinal edge together.

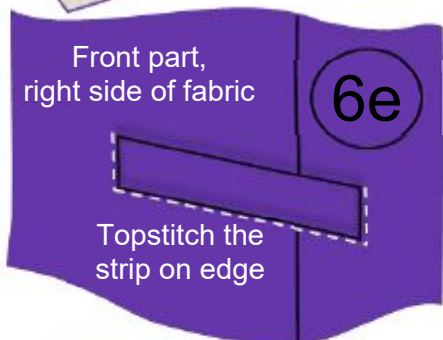


b) Attach the strip and the pocket pouch onto the front part with a 1cm seam allowance and then sew them down. Comply precisely with the specified stitching line lengths!

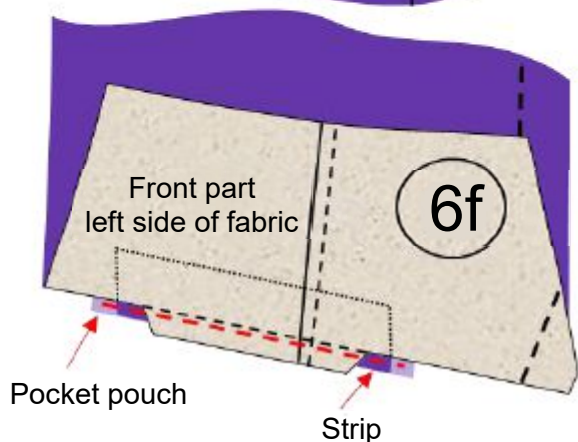


c) From the left side of the fabric, cut between the lines. This results in small triangles. Caution! Do not cut the strip and pocket pouch!

d) Turn the strip upwards, pull the overlap, the triangle, and the pocket pouch inward, and iron.



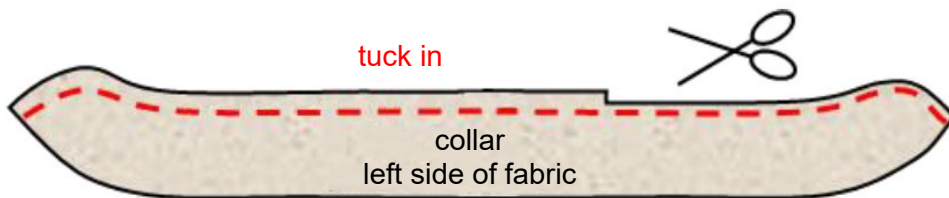
e) Topstitch the strip from the right. Caution! Do not sew the pocket pouch; instead, turn it upwards before sewing!



f) Sew the pocket pouch's second sewing edge onto the strip's seam allowance (the edge in question is indicated in the pattern example).

g) Iron the pocket pouch downwards and sew the open longitudinal edges together.

7. **Tuck in the collar** and trim back the seam allowances:



The outer collar is 1cm longer than the inner collar. The longer length of the outer collar must be equally distributed when tucking in the fabric. This will make the collar sit better around the neck and there will not be any wrinkles in the inner collar.

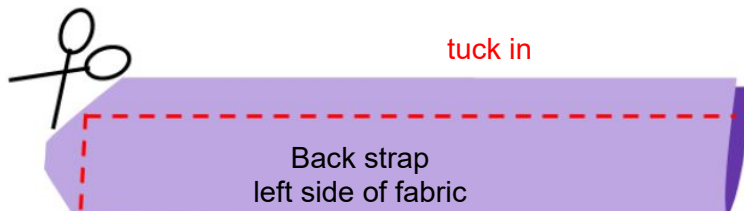


sew together

After tucking in the collar, turn it, iron it, and **sew the open edge together** with a 0.5cm seam allowance.

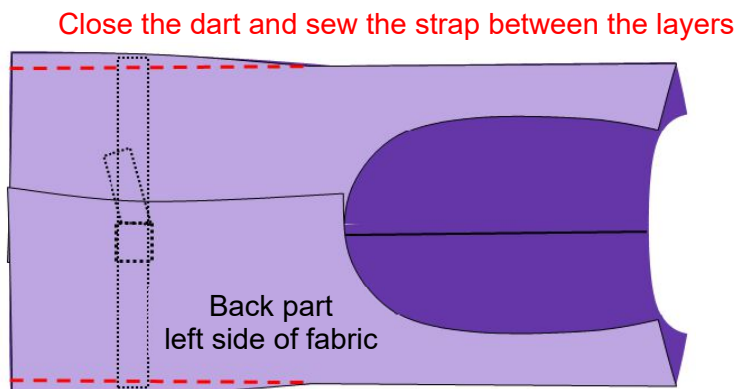
8. **Back strap with clasp:**

Crease the back strap in half lengthwise and tuck it in. A transverse edge remains open for turning over. Turn the back strap and iron it. It has a finished width of 2cm. There are various types of waistcoat closures. Please check in advance whether the width fits the clasp. Sew the clasp onto the strap. The manner of sewing on the back part clasp depends on the clasp.



9. **Outer fabric two: Sew the rear center seam** up to the beginning of the slit, and iron the seam allowances apart.

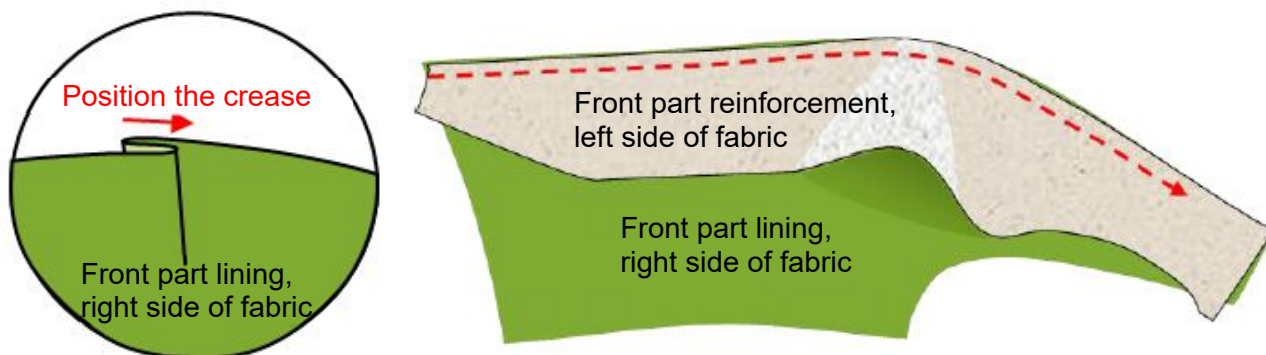
10. **Outer fabric two: Sew the back part dart,** thereby also fastening the back strap **between the layers (on the right side of the fabric).** Iron the dart to the side seam.



11. Back part lining: Sew the rear center seam up to the beginning of the slit, and iron the seam allowances apart.

12. Back part lining: Sew the dart and iron it to the rear center.

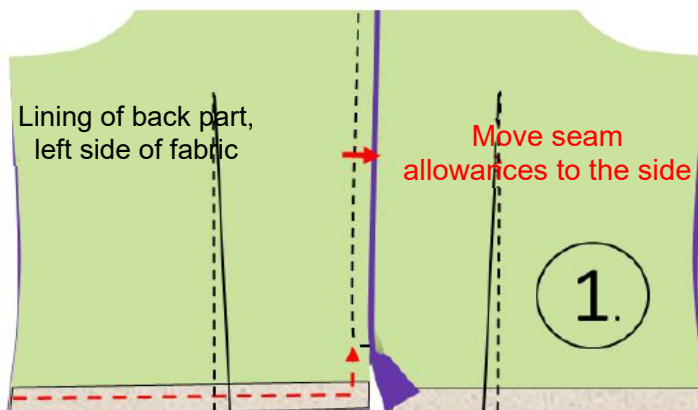
13. Front part lining: Position the crease and sew the lining onto the front part reinforcement.



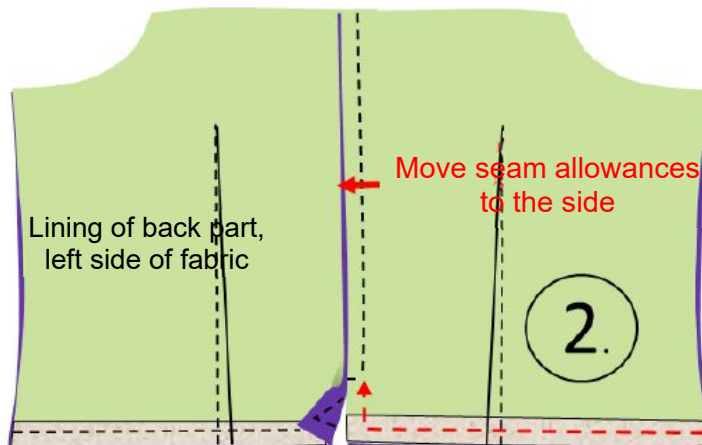
14. Sew the shoulder seams of the outer fabric and lining. Iron the seam allowances from the outer fabric to the back part and the seam allowances from the lining to the front part.

15. Tuck in the back part seam and the back part slit:

Place the outer fabric and the lining right sides together. First move the rear center's seam allowances to one side and sew the seam and slit, then move the seam allowances to the other side and sew the seam and slit.



Sew seam and slit

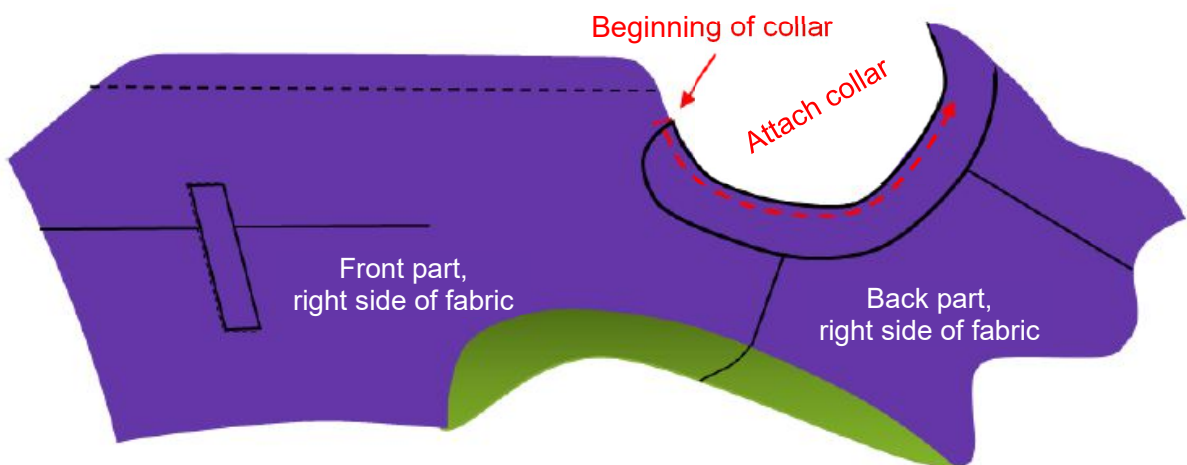


Sew seam and slit

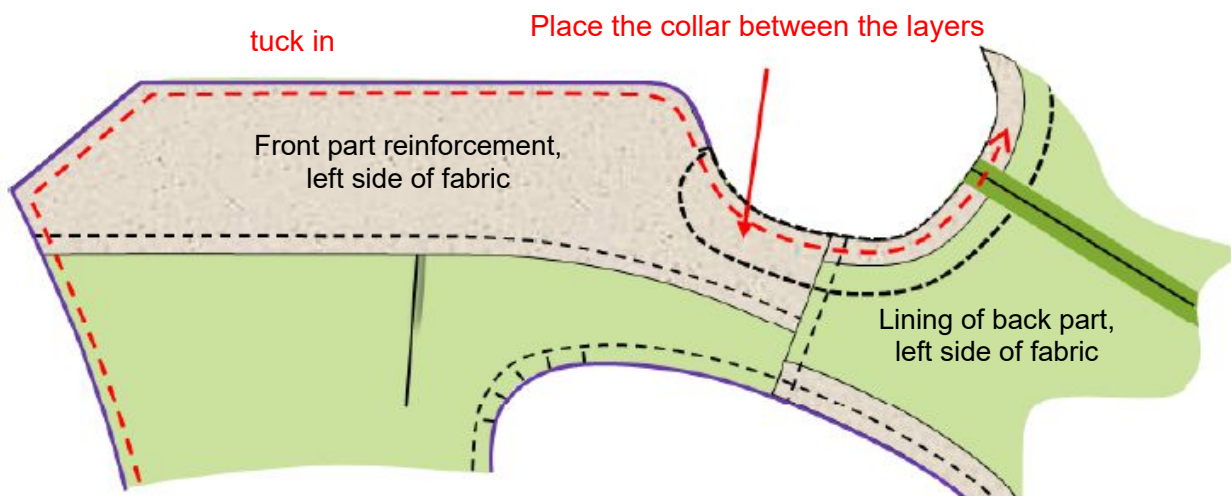
Trim back the seam allowances at the corner of the slit, turn the back part to the right, and iron the seam. Then turn it inside-out again for point 16.

16. Tuck in the armholes: Place the outer fabric and the lining right sides together and tuck in the armholes. Pinch the seam allowances. Turn the waistcoat and iron the edges. Then turn the waistcoat inside-out for point 18.

17. Attach the collar to the neckline of the outer fabric. The collar begins and ends at the mark, "Beginning of collar". Make sure that the inner collar is on top.

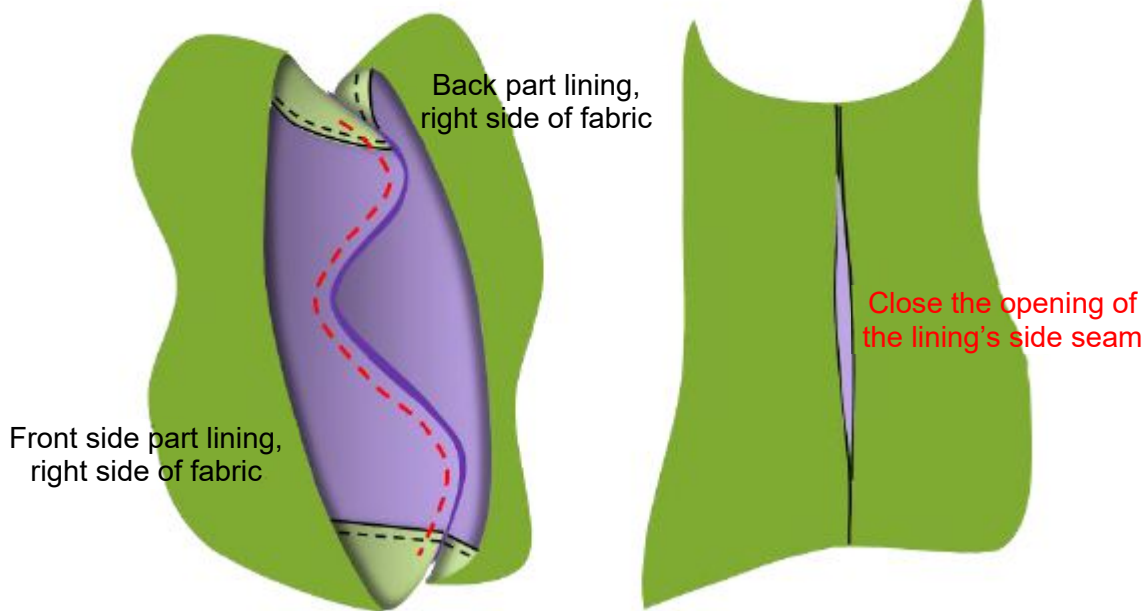


18. Tuck in the front part seam, the front edge, and the neckline: Place the outer fabric and the lining right sides together. The collar goes between the layers and is sewed together with them when tucking in. After tucking, trim back the seam allowances and pinch. Turn the waistcoat (the front parts are pulled through the shoulders) and iron the edges.

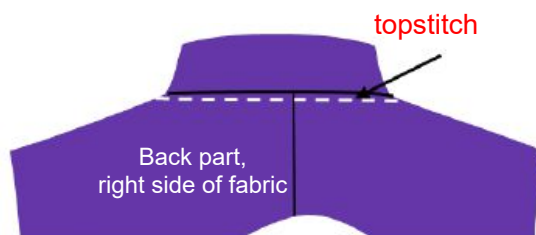


19. Finish the side seam of the outer fabric and lining. An opening (turning opening) remains in the lining side seam, which is sewn shut by hand or with the machine.

Sew the side seam

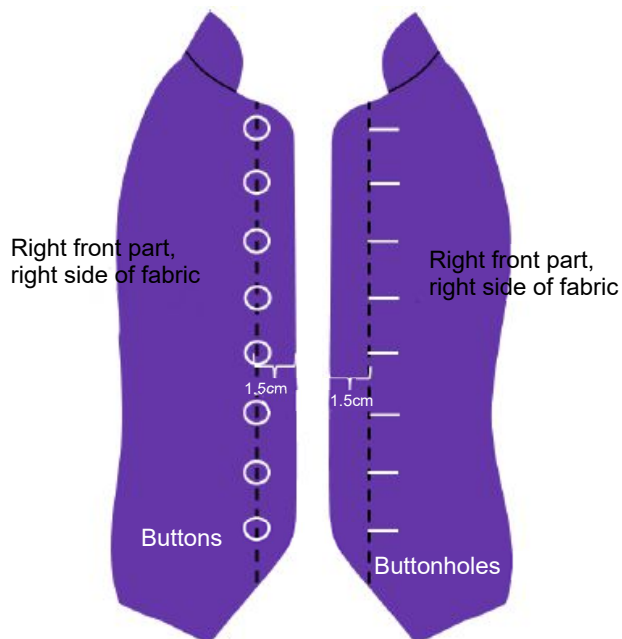


20. If desired, topstitch the seam, the armholes, and the front edge. Topstitch the back part neckline in any case.



21. Buttons and buttonholes: Sew the buttonholes horizontally into the left front part as marked at the front center. Sew the buttons onto the right front part as marked at the front center.

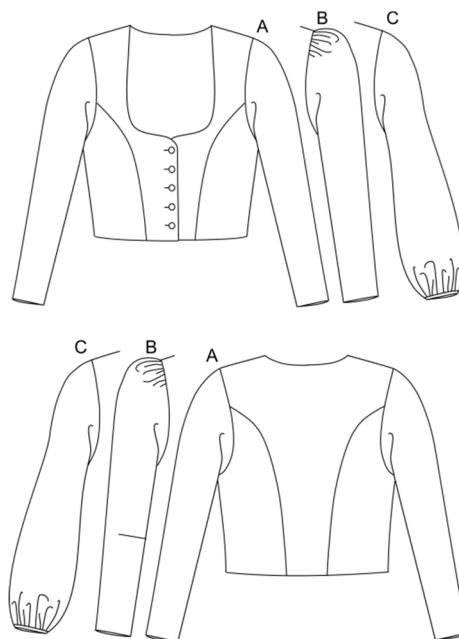
Done! Have fun sewing.





PATTERN DOWNLOAD

Upper part of dirndl dress - 112



Specifications for upper part of dirndl dress:

Outer fabric usage at 140cm fabric width: Size 34 - 36 = 115cm, Size 38 - 40 = 120cm, Size 42 - 46 = 130cm, Size 48 = 140cm, Size 50 = 145cm

Lining usage at 140cm fabric width: Size 34 - 36 = 50cm, Size 38 - 40 = 55cm, Size 42 = 60cm, Size 44 = 70cm, Size 46 - 50 = 75cm

Iron-on fleece liner at 90cm fabric width: Size 34 = 75cm, Size 36 - 42 = 80cm, Size 44 = 95cm, Size 46 - 50 = 120cm

Components: 6-7 buttons, ornamental ribbons as desired for the neckline, braid tape if desired (if the braid tape is to be made using outer fabric, this must be added to the outer fabric usage), snap fastener, thread.

Body measurements table:

Size	34	36	38	40	42	44	46	48	50	52
Chest measurement	81-83	85-97	89-91	93-95	97-99	103-105	109-111	115-117	121-123	127-129
Waist measurement	65-67	69-71	73-75	77-79	81-83	88-90	94-96	101-103	107-109	114-116

I recommend that you first sew this piece of clothing using test fabric in order to achieve an optimal fit.

Legal information: This pattern was created by Roswitha Töchterle. Reproduction, alteration, and providing pattern downloads to third parties without permission is forbidden. This pattern is intended for private use. No liability is assumed for errors in the pattern or sewing instructions. No guarantee is given that a piece of clothing that the customer has made according to the pattern they have ordered will fit.

For questions, please contact mail@toechterle.de.

SEWING INSTRUCTIONS

Upper part of dirndl dress - 142

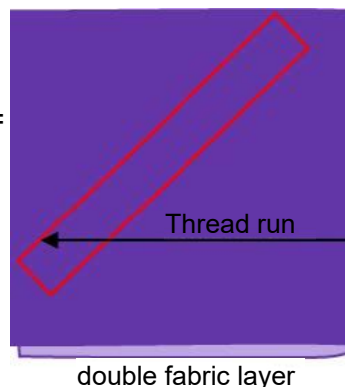
The following instructions are intended as guidelines rather than mandatory requirements.

1. Prewash cotton fabrics.

2. **a) Trimming the outer fabric:** The seam allowances are visibly indicated in the pattern. It can be cut-to-size immediately. Keep the thread run in mind! With fabrics that have a pattern, pay attention to the pattern! Each pattern part is marked with how many times it has to be cut-to-size.

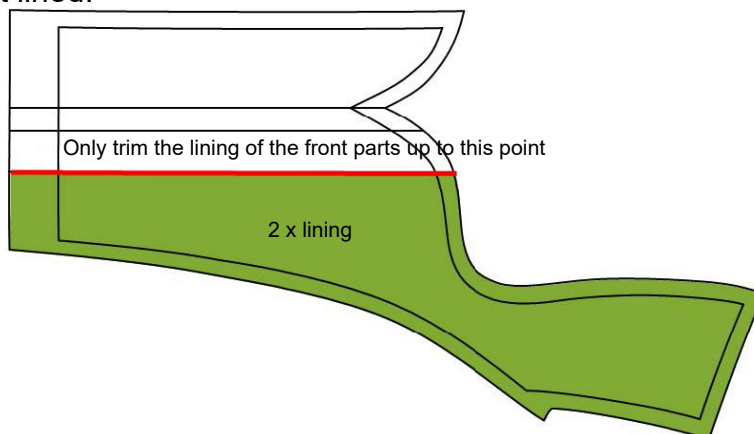
Size	34	36	38	40	42	44	46	48	50
Length in cm	23.5	24	24.5	25	25.5	26	26.5	27	27.5
Width in cm	4	4	4	4	4	4	4	4	4

For sleeve option C “Long wide sleeves” a pattern part with a double fabric layer must also be cut-to-size diagonally across the thread run (= edging tape for the sleeve hem). The length and width are given in the list above.

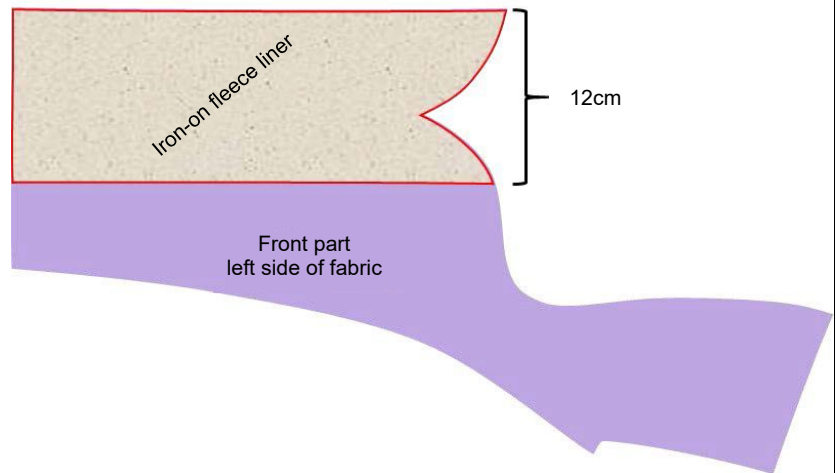


- b) Trimming the lining:** Trim the lining in the same way as the outer fabric, but without sleeves. The sleeves are not lined.

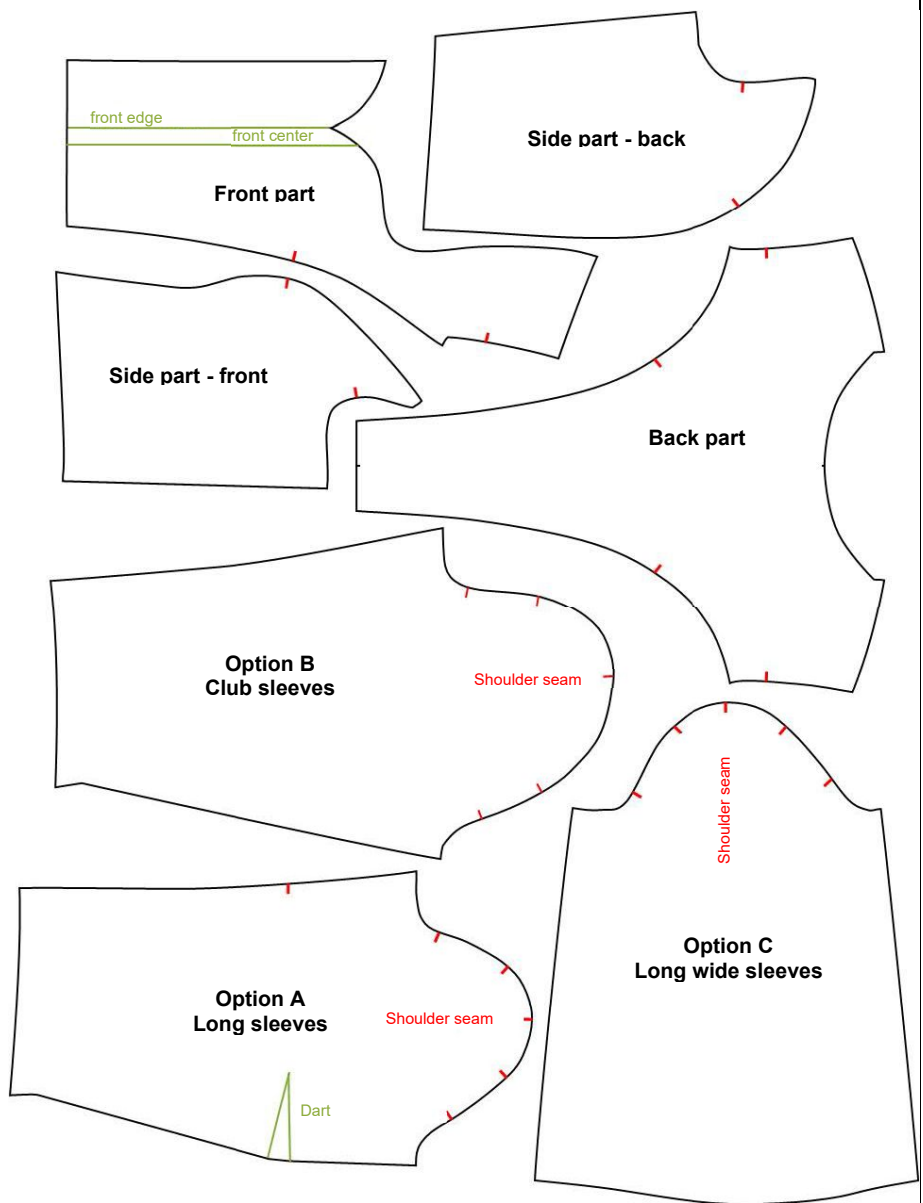
Caution! Only trim the front part lining to the line indicated in the pattern. It already contains the seam allowances.



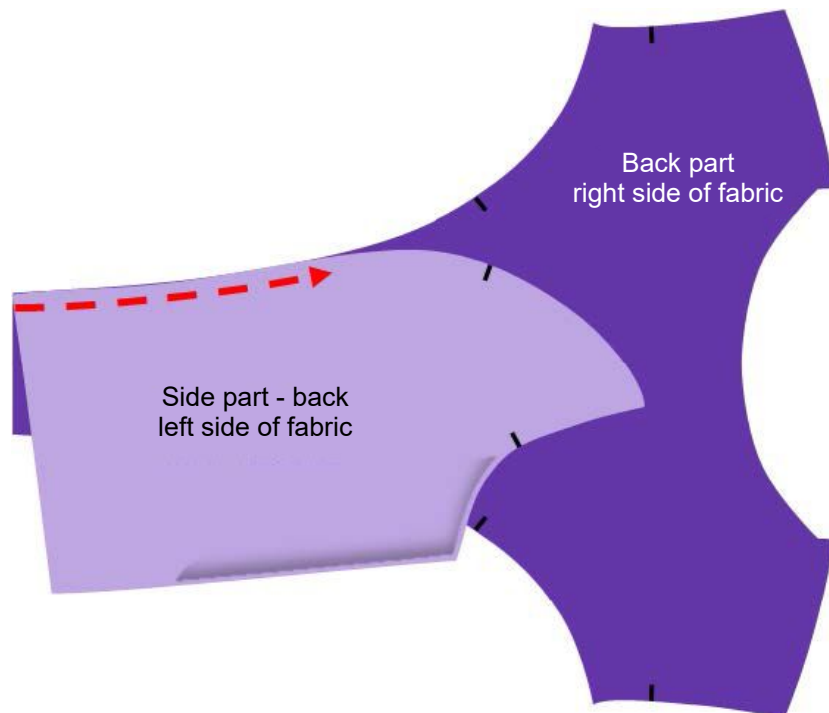
3. Bonding the outer fabric: Depending on the fabric composition, bond the entire top part (excluding the sleeves) with an iron-on fleece liner, or just the front area in both front parts where the buttons and buttonholes are to be sewed on later (see drawing).



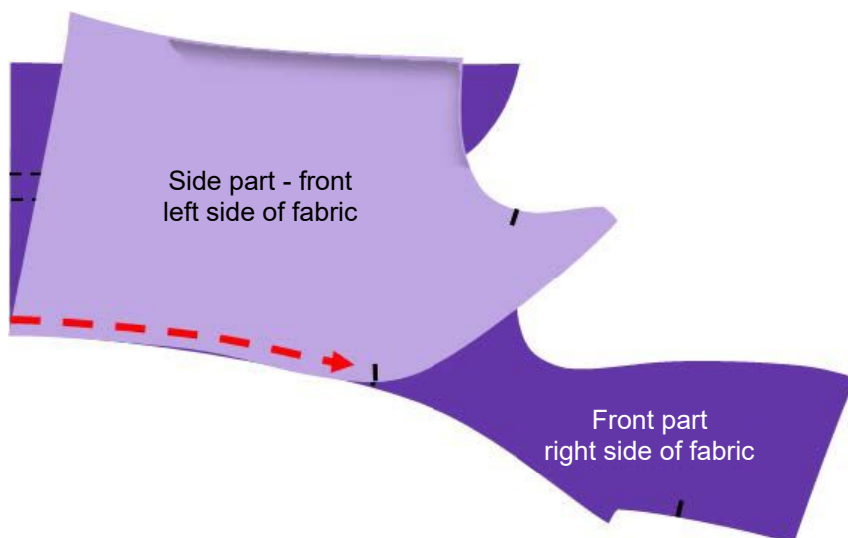
4. Transfer the marks from the pattern part to the left side of the outer fabric and lining. The marks are indicated here in red. Tack all green lines with tacking thread so that they are visible on both sides of the fabric.



5. Sew the back part of the outer fabric onto the back side part (if braid tape is desired, sew it on first). Iron the seam allowances for the back center.



6. Sew the front part of the outer fabric onto the front side part (if braid tape is desired, sew it on first). Iron the seam allowances for the front center.

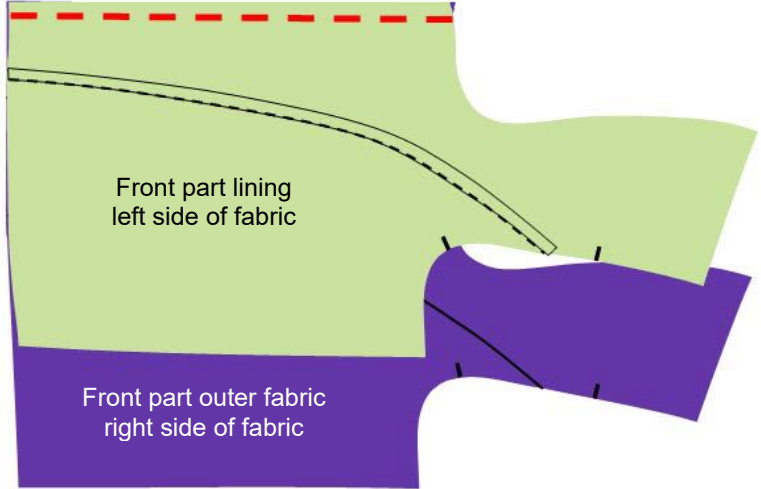


7. Sew the shoulder seams of the outer fabric. Caution! The shoulder back part is somewhat longer than the shoulder front part; this difference must be adhered to in order to achieve a good fit! Iron the seam allowances into the back part.

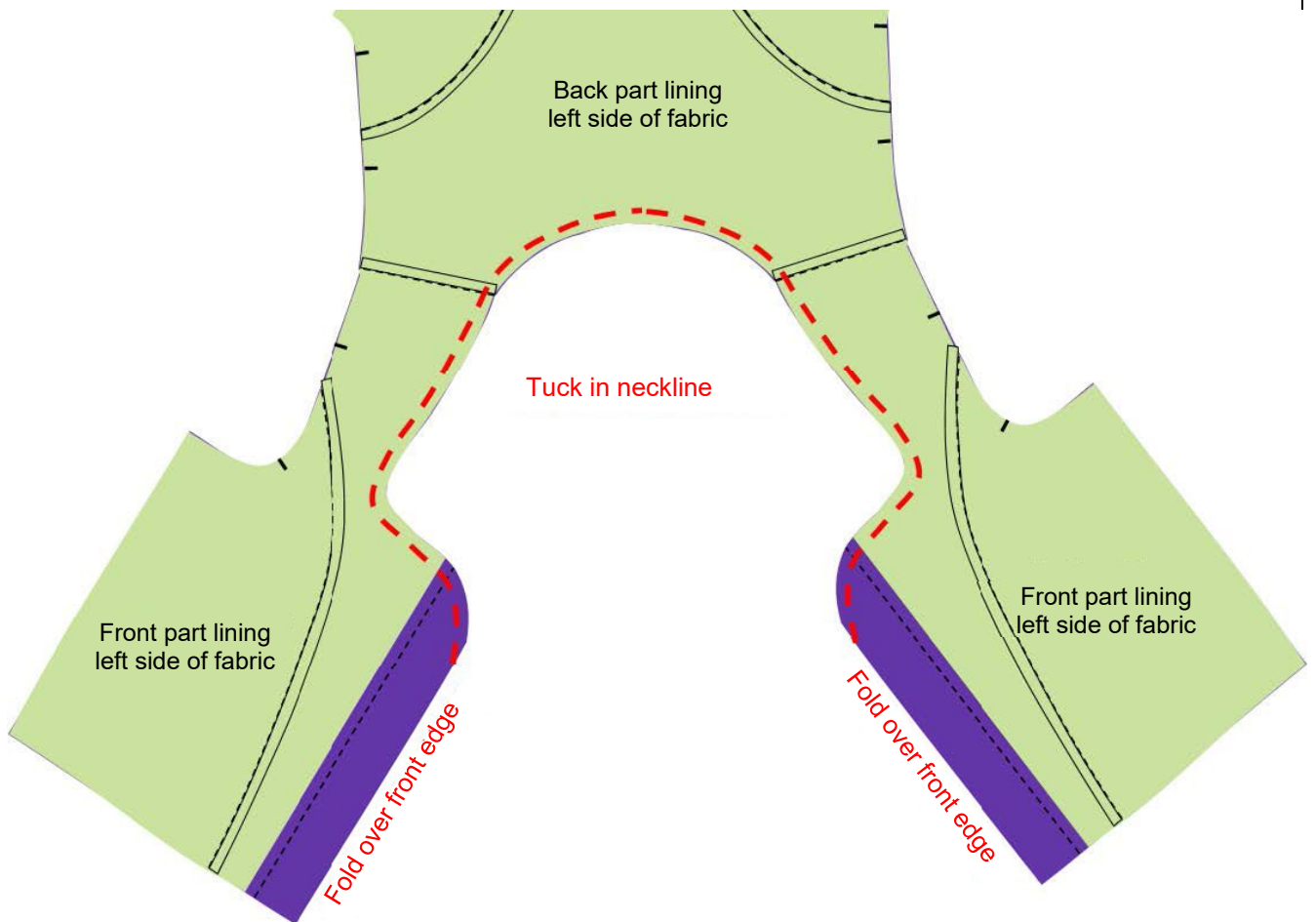
8. Sew the lining in the same way as the outer fabric (points 5, 6, and 7).

9. Sew the lining and the outer fabric together in the front part. Iron the seam allowances for the side seam.

Sew the outer fabric and lining together



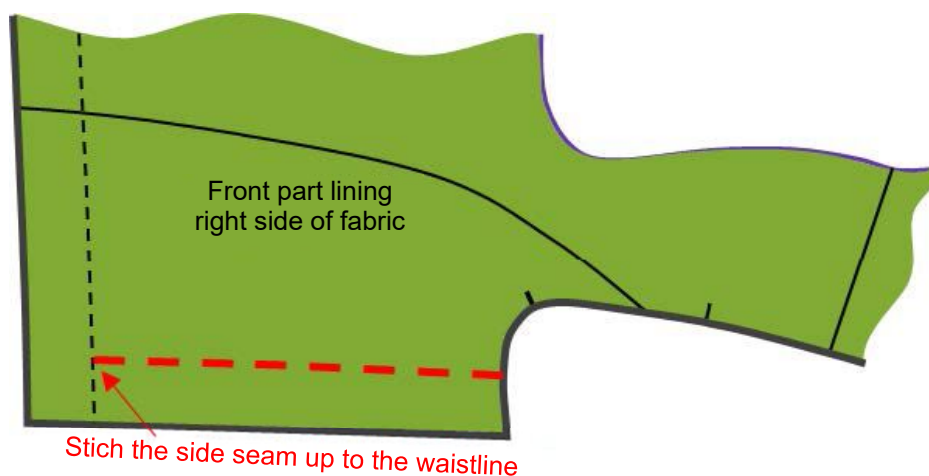
10. Tuck in the neckline: Place the outer fabric and lining right sides together. The front edge is the fold line. Tuck in the neckline. After tucking, trim back the seam allowances and pinch. Turn the part and iron the edges.



11. Hem the fabric edges of the outer fabric and lining together at the armhole, side seam and seam using a zig-zag stitch or overlock stitch.

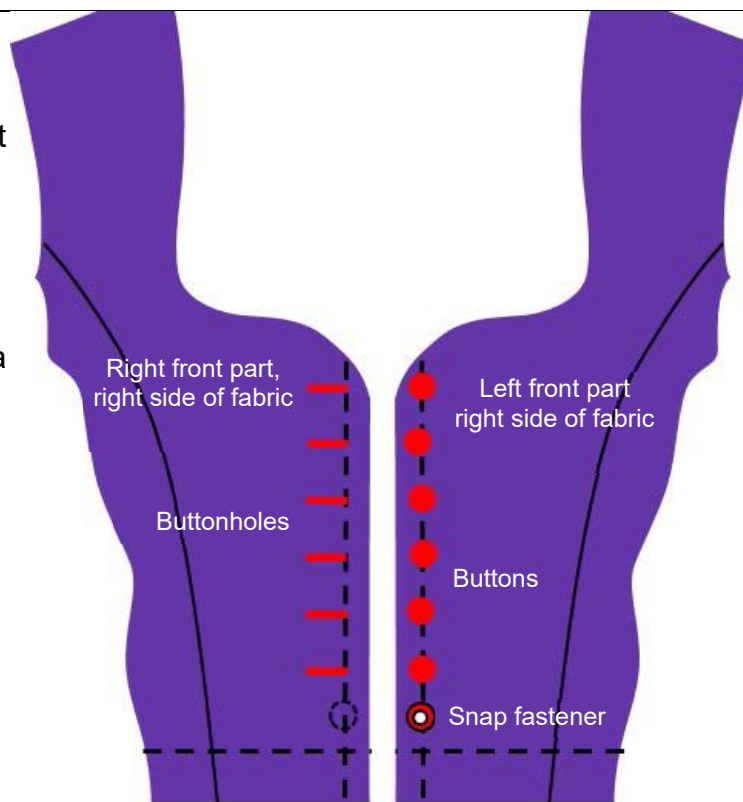
12. Mark the waistline with tacking thread. The waistline is indicated in the pattern, 3cm away from the edge of the seam. The dirndl dress skirt is to be sewn onto this line later.

13. Sew the side seam. The side seam has a seam allowance of 3cm to allow for changing the width later! Only sew the side seam up until the marked waistline. The rest of the side seam remains open so that it is not too tight. Iron the seam allowances apart from each other.



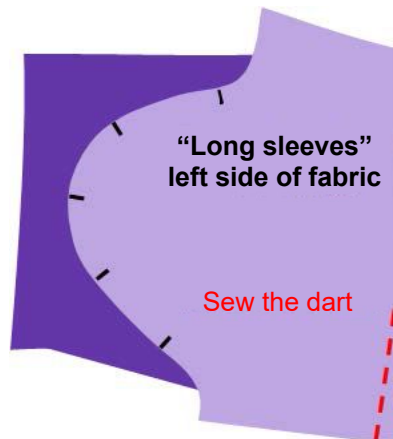
14. Buttons and buttonholes:

Sew the buttonholes horizontally into the right front part as marked at the front center. Sew the buttons onto the left front part as marked at the front center. The last button before the waist mark is a snap fastener, because a button under the skirt would stick out.

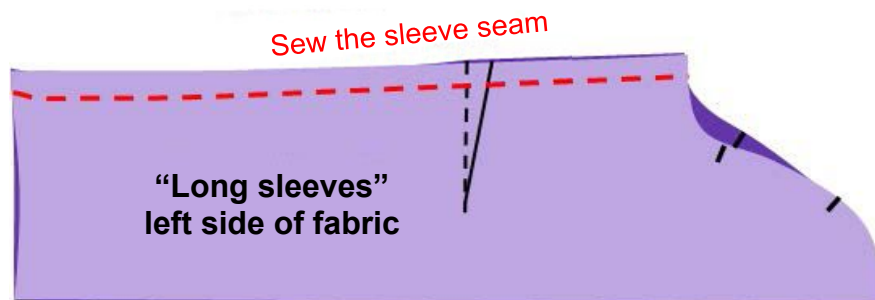


15. Sleeve option A, "long sleeves":

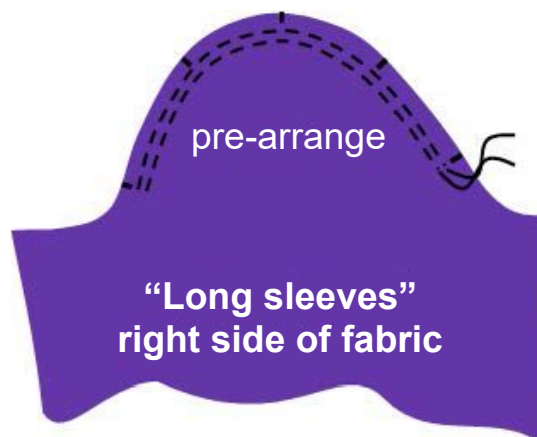
- a) Hem the sleeves all around with a zig-zag stitch or overlock stitch.
- b) Sew the dart. Iron the dart contents for the sleeve cap.



- c) Sew the sleeve seam. Caution! The sleeve seam has a seam allowance of 2cm to allow for changing the width later! Iron the seam allowances apart from each other.

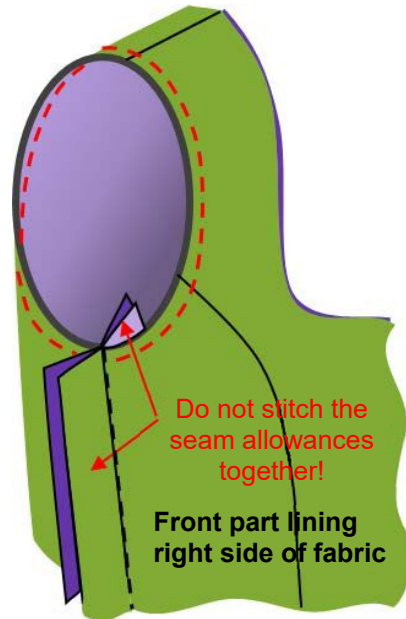


- d) Pre-arrange the sleeve cap. For firm, stiff fabrics, it is advisable to row the sleeve cap slightly in front between the marks and iron it quickly. This allows the fullness of the sleeve cap to be better distributed in the armhole when sewing on the sleeve.



e) Sewing the sleeve into the armhole:

Attach the sleeve to the armhole by hand first (note the marks!) and then sew it with the machine. Caution! Do not sew the seam allowances of the sleeve seam and side seam together! Otherwise creases and diagonal pulling will develop at the side seam.



f) Iron the sleeve hem down by 3cm toward the inside and sew it by hand, or **sew it down** with the machine.

16. Sleeve option B “Club sleeves”:

- a) Hem the sleeves all around with a zig-zag stitch or overlock stitch.
- b) Pre-arrange the sleeve cap between the marks.



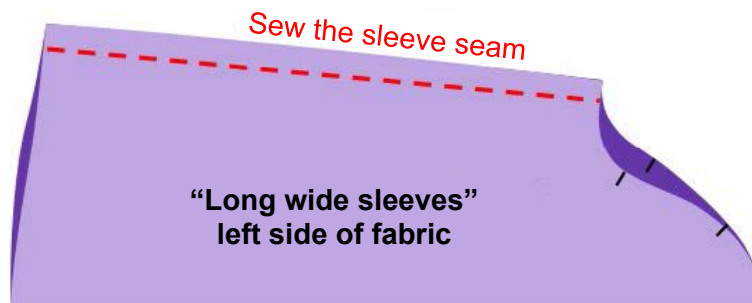
c) Sew the sleeve seam. Caution! The sleeve seam has a seam allowance of 2cm to allow for changing the width later! Iron the seam allowances apart from each other.



- d) **Sew the sleeve into the armhole.** See sleeve option A, point e).
- e) Iron **the sleeve hem** inwards by 3cm and sew it by hand, or **sew it down using** the machine.

17. Sleeve option C, "Long wide sleeves":

- a) **Hem the sleeves all around** with a zig-zag stitch or overlock stitch.
- b) **Sew the sleeve seam.** Caution! The sleeve seam has a seam allowance of 2cm to allow for changing the width later! Iron the seam allowances apart from each other.

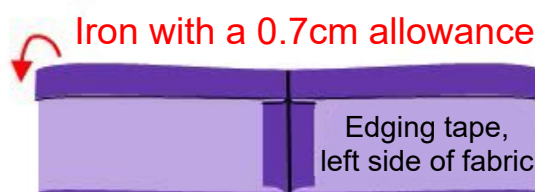


- c) **Pre-arrange the sleeve cap.** See sleeve option A, point d).
- d) **Sew the sleeve into the armhole.** See sleeve option A, point e).
- e) **Include** the separately cut-to-size **edging tape** for the sleeve hem (see point 2 a) on the short side with a 1cm seam allowance **in the ring**, then iron the seam allowances apart. Then check whether the tape can easily be pushed over the hand. Adjust the width as needed.

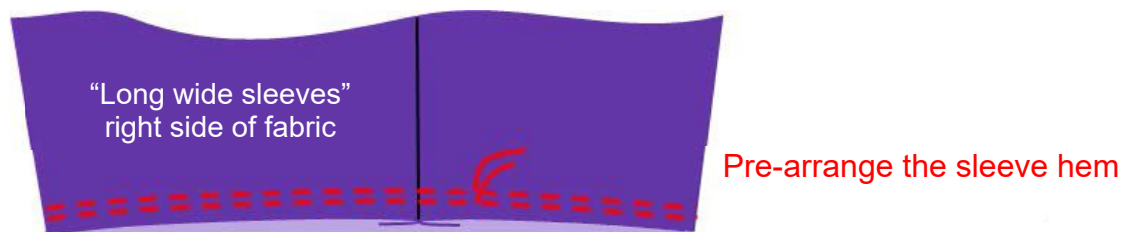


Include the tape in the ring

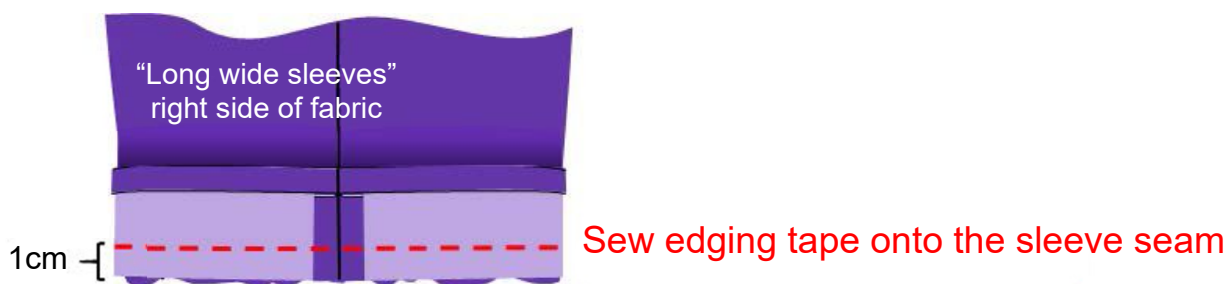
- f) **Iron** one side of the tape **with a 0.7cm allowance** onto the left side of the fabric.



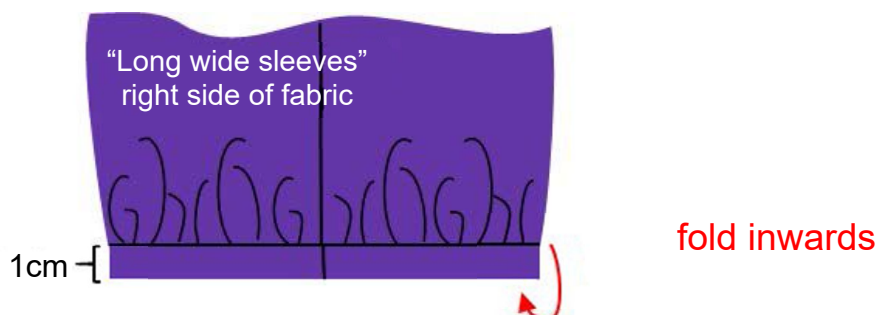
g) Pre-arrange the sleeve hem to fit the width of the edging tape.



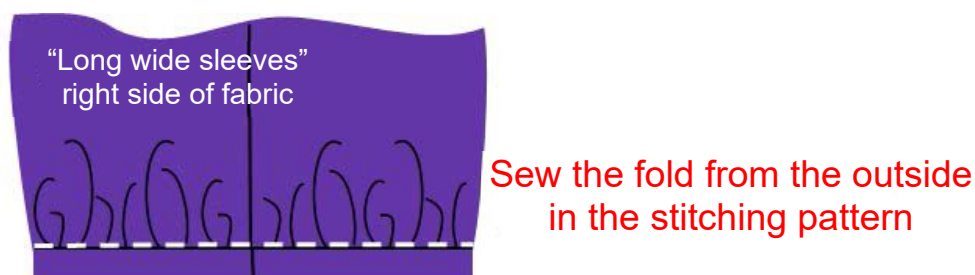
h) Bind the sleeve seam with the edging tape: To do this, first sew the edging tape onto the sleeve seam with a 1cm allowance.



i) Then fold the edging tape inwards.



j) Finally, sew the edging tape in place from the outside in the stitching pattern.
 The folded-in part must be included on the inside.



18. Sew ribbon onto the neckline as desired.

19. Sew the dirndl dress skirt on at the waistline marking. Caution! The upper part of dirndl dress waistline marking is at 3cm; the skirt should only have a seam allowance of 1 cm. This results in gradation of the seam allowances. As a result, the length of the top can be adjusted, and the seam allowances are less bulky.

Done! Have fun sewing.